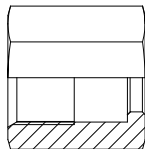


ASIENTO PLANO ORFS

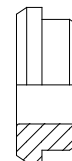
TUERCA ORFS

CÓDIGO	ROSCA
BG70130004	9/16
BG70130006	11/16
BG70130008	13/16
BG70130010	1
BG70130012	1.3/16
BG70130016	1.7/16
BG70130020	1.11/16
BG70130024	2



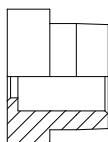
FERULA: TUBO PULGADAS

CÓDIGO	ROSCA
BG70150004	9/16 -TUBO 1/4
BG70150005	11/16 -TUBO 5/16
BG70150006	11/16 -TUBO 3/8
BG70150008	13/16 -TUBO 1/2
BG70150010	1 -TUBO 5/8
BG70150012	1.3/16 -TUBO 3/4
BG70150016	1.7/16 -TUBO 1
BG70150020	1.11/16 -TUBO 1 1/4
BG70150024	2 -TUBO 1.1/2



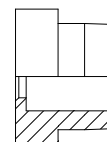
FERULA SOLDAR para TUBO EN PULGADAS

CÓDIGO	ROSCA
BG70110404	9/16 -TUBO 1/4
BG70110605	11/16 -TUBO 5/16
BG70110606	11/16 -TUBO 3/8
BG70110806	13/16 -TUBO 3/8
BG70110808	13/16 -TUBO 1/2
BG70111010	1 -TUBO 5/8
BG70111212	1.3/16 -TUBO 3/4
BG70111616	1.7/16 -TUBO 1
BG70112020	1.11/16 -TUBO 1 1/4
BG70112424	2 -TUBO 1.1/2



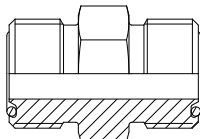
FERULA SOLDAR para TUBO MÉTRICO

CÓDIGO	ROSCA
BG70120406	9/16 -TUBO 6 mm
BG70120608	11/16 -TUBO 8 mm
BG70120610	11/16 -TUBO 10 mm
BG70120812	13/16 -TUBO 12 mm
BG70121014	1 -TUBO 14 mm
BG70121015	1 -TUBO 15 mm
BG70121016	1 -TUBO 16 mm
BG70121218	1.3/16 -TUBO 18 mm
BG70121220	1.3/16 -TUBO 20 mm
BG70121622	1.7/16 -TUBO 22 mm
BG70121625	1.7/16 -TUBO 25 mm
BG70122028	1.11/16 -TUBO 28 mm
BG70122030	1.11/16 -TUBO 30 mm
BG70122032	1.11/16 -TUBO 32 mm
BG70122435	2 -TUBO 35 mm
BG70122438	2 -TUBO 38 mm



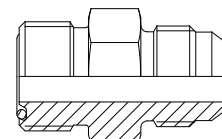
EMPALME MACHO ORFS

CÓDIGO	ROSCA
BG70170004	MF-MF 9/16
BG70170006	MF-MF 11/16
BG70170806	MF 13/16 - MF 11/16
BG70170008	MF-MF 13/16
BG70171008	MF 1 - MF 13/16
BG70170010	MF-MF 1
BG70170012	MF-MF 1.3/16
BG70170016	MF-MF 1.7/16
BG70170020	MF-MF 1.11/16
BG70170024	MF-MF 2



EMPALME MACHO ORFS - MACHO JIC 37°

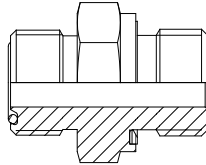
CÓDIGO	ROSCA
BG70180404	MF 9/16 -7/16 JIC
BG70180606	MF 11/16 -9/16 JIC
BG70180808	MF 13/16 -3/4 JIC
BG70181010	MF 1 -7/8 JIC
BG70181212	MF 1.3/16 -1.1/16 JIC
BG70181616	MF 1.7/16 -1.5/16 JIC
BG70182020	MF 1.11/16 -1.5/8 JIC
BG70182424	MF 2 -1.7/8 JIC



ASIENTO PLANO ORFS

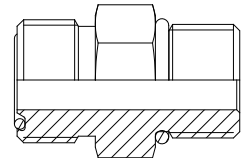
EMPALME MACHO ORFS - MACHO GAS BSPP

CÓDIGO	ROSCA
BG70190402	MF 9/16 -1/8 BSPP
BG70190404	MF 9/16 -1/4 BSPP
BG70190406	MF 9/16 -3/8 BSPP
BG70190408	MF 9/16 -1/2 BSPP
BG70190602	MF 11/16 -1/8 BSPP
BG70190604	MF 11/16 -1/4 BSPP
BG70190606	MF 11/16 -3/8 BSPP
BG70190608	MF 11/16 -1/2 BSPP
BG70190612	MF 11/16 -3/4 BSPP
BG70190804	MF 13/16 -1/4 BSPP
BG70190806	MF 13/16 -3/8 BSPP
BG70190808	MF 13/16 -1/2 BSPP
BG70190812	MF 13/16 -3/4 BSPP
BG70190816	MF 13/16 -1 BSPP
BG70191006	MF 1 -3/8 BSPP
BG70191008	MF 1 -1/2 BSPP
BG70191012	MF 1 -3/4 BSPP
BG70191016	MF 1 -1 BSPP
BG70191208	MF 1.3/16 -1/2 BSPP
BG70191212	MF 1.3/16 -3/4 BSPP
BG70191216	MF 1.3/16 -1 BSPP
BG70191220	MF 1.3/16 -1.1/4 BSPP
BG70191612	MF 1.7/16 -3/4 BSPP
BG70191616	MF 1.7/16 -1 BSPP
BG70191620	MF 1.7/16 -1.1/4 BSPP
BG70191624	MF 1.7/16 -1.1/2 BSPP
BG70192012	MF 1.11/16 -3/4 BSPP
BG70192016	MF 1.11/16 -1 BSPP
BG70192020	MF 1.11/16 -1.1/4 BSPP
BG70192024	MF 1.11/16 -1.1/2 BSPP
BG70192424	MF 2 -1.1/2 BSPP



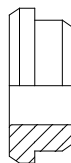
EMPALME MACHO ORFS - UNF 2A

CÓDIGO	ROSCA
BG70210404	MF 9/16 -7/16 UNF
BG70210406	MF 9/16 -9/16 UNF
BG70210408	MF 9/16 -3/4 UNF
BG70210604	MF 11/16 -7/16 UNF
BG70210606	MF 11/16 -9/16 UNF
BG70210608	MF 11/16 -3/4 UNF
BG70210610	MF 11/16 -7/8 UNF
BG70210806	MF 13/16 -9/16 UNF
BG70210808	MF 13/16 -3/4 UNF
BG70210810	MF 13/16 -7/8 UNF
BG70210812	MF 13/16 -1.1/16 UNF
BG70210816	MF 13/16 -1.5/16 UNF
BG70211008	MF 1 -3/4 UNF
BG70211010	MF 1 -7/8 UNF
BG70211012	MF 1 -1.1/16 UNF
BG70211208	MF 1.3/16 -3/4 UNF
BG70211210	MF 1 3/16 -7/8 UNF
BG70211212	MF 1.3/16 -1.1/16 UNF
BG70211216	MF 1.3/16 -1.5/16 UNF
BG70211612	MF 1.7/16 -1.1/16 UNF
BG70211616	MF 1.7/16 -1.5/16 UNF
BG70211620	MF 1.7/16 -1.5/8 UNF
BG70212016	MF 1.11/16 -1.5/16 UNF
BG70212020	MF 1.11/16 -1.5/8 UNF
BG70212024	MF 1.11/16 -1.7/8 UNF
BG70212420	MF 2 -1.5/8 UNF
BG70212424	MF 2 -1.7/8 UNF



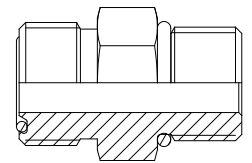
FERULA: TUBO MÉTRICO

CÓDIGO	ROSCA
BG70830006	9/16 -TUBO 6 mm
BG70830008	11/16 -TUBO 8 mm
BG70830010	11/16 -TUBO 10 mm
BG70830012	13/16 -TUBO 12 mm
BG70830014	1 -TUBO 14 mm
BG70830015	1 -TUBO 15 mm
BG70830016	1 -TUBO 16 mm
BG70830018	1.3/16 -TUBO 18 mm
BG70830020	1.3/16 -TUBO 20 mm
BG70830022	1.7/16 -TUBO 22 mm
BG70830025	1.7/16 -TUBO 25 mm
BG70830028	1.11/16 -TUBO 28 mm
BG70830030	1.11/16 -TUBO 30 mm
BG70830032	1.11/16 -TUBO 32 mm
BG70830035	2 -TUBO 35 mm
BG70830038	2 -TUBO 38 mm



EMPALME MACHO ORFS - MACHO MÉTRICO

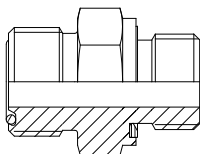
CÓDIGO	ROSCA
BG70230412	9/16 -M12x1'5 ISO 6149
BG70230414	9/16 -M14x1'5 ISO 6149
BG70230612	11/16 -M12x1'5 ISO 6149
BG70230614	11/16 -M14x1'5 ISO 6149
BG70230616	11/16 -M16x1'5 ISO 6149
BG70230618	11/16 -M18x1'5 ISO 6149
BG70230814	13/16 -M14x1'5 ISO 6149
BG70230816	13/16 -M16x1'5 ISO 6149
BG70230818	13/16 -M18x1'5 ISO 6149
BG70230822	13/16 -M22x1'5 ISO 6149
BG70231018	1 -M18x1'5 ISO 6149
BG70231022	1 -M22x1'5 ISO 6149
BG70231222	1.3/16 -M22x1'5 ISO 6149
BG70231227	1.3/16 -M27x2 ISO 6149
BG70231233	1.3/16 -M33x2 ISO 6149
BG70231633	1.7/16 -M33x2 ISO 6149
BG70232033	1.11/16 -M33x2 ISO 6149
BG70232042	1.11/16 -M42x2 ISO 6149
BG70232448	2 -M48x2 ISO 6149



ASIENTO PLANO ORFS

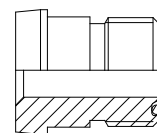
EMPALME MACHO ORFS - MACHO MÉTRICO CON JUNTA

CÓDIGO	ROSCA
BG70230412ED	9/16 -M12x1.5 ED
BG70230614ED	11/16 -M14x1.5 ED
BG70230616ED	11/16 -M16x1.5 ED
BG70230818ED	13/16 -M18x1.5 ED
BG70230822ED	13/16 -M22x1.5 ED
BG70231022ED	1 -M22x1.5 ED
BG70231222ED	1.3/16 -M22x1.5 ED
BG70231227ED	1.3/16 -M27x1.5 ED
BG70231633ED	1.7/16 -M33x2 ED
BG70232042ED	1.11/16 -M42x2 ED
BG70232448ED	2 -M48x2 ED



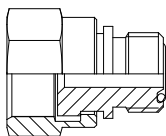
REDUCTOR TUBO - TUBO ORFS

CÓDIGO	ROSCA
BG70310804	TL 13/16-MF 9/16
BG70311004	TL 1-MF 9/16
BG70311006	TL 1-MF 11/16
BG70311008	TL 1-MF 13/16
BG70311204	TL 1.3/16-MF 9/16
BG70311206	TL 1.3/16-MF 11/16
BG70311208	TL 1.3/16-MF 13/16
BG70311608	TL 1.7/16-MF 13/16
BG70311610	TL 1.7/16-MF 1
BG70312012	TL 1.11/16-MF 1.3/16
BG70312416	TL 2-MF 1.7/16
BG70312420	TL 2-MF 1.11/16



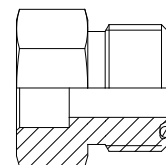
ADAPTADOR REDUCTOR TL-MACHO ORFS

CÓDIGO	ROSCA
BG70310604	TL 11/16-MF 9/16
BG70310806	TL 13/16-MF 11/16
BG70311210	TL 1.3/16-MF 1
BG70311612	TL 1.7/16-MF 1.3/16
BG70312016	TL 1.11/16-MF 1.7/16



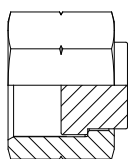
ADAPTADOR SOLDABLE MACHO ORFS -TUBO PULGADAS

CÓDIGO	ROSCA
BG70390404	9/16 -TUBO 1/4
BG70390605	11/16 -TUBO 5/16
BG70390606	11/16 -TUBO 3/8
BG70390808	13/16 -TUBO 1/2
BG70391010	1 -TUBO 5/8
BG70391212	1.3/16 -TUBO 3/4
BG70391616	1.7/16 -TUBO 1
BG70392020	1.11/16 -TUBO 1.1/4
BG70392424	2 -TUBO 1.1/2



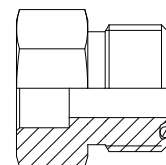
TAPON TUERCA CIEGA ORFS

CÓDIGO	ROSCA
BG70430004	CIEGA 9/16
BG70430006	CIEGA 11/16
BG70430008	CIEGA 13/16
BG70430010	CIEGA 1
BG70430012	CIEGA 1.3/16
BG70430016	CIEGA 1.7/16
BG70430020	CIEGA 1.11/16
BG70430024	CIEGA 2



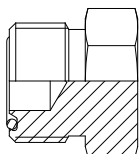
ADAPTADOR SOLDABLE MACHO ORFS -TUBO MÉTRICO

CÓDIGO	ROSCA
BG71390406	9/16 -TUBO 6 mm
BG71390608	11/16 -TUBO 8 mm
BG71390610	11/16 -TUBO 10 mm
BG71390812	13/16 -TUBO 12 mm
BG71391014	1 -TUBO 14 mm
BG71391015	1 -TUBO 15 mm
BG71391016	1 -TUBO 16 mm
BG71391218	1.3/16 -TUBO 18 mm
BG71391220	1.3/16 -TUBO 20 mm
BG71391622	1.7/16 -TUBO 22 mm
BG71391625	1.7/16 -TUBO 25 mm
BG71392028	1.11/16 -TUBO 28 mm
BG71392030	1.11/16 -TUBO 30 mm
BG71392032	1.11/16 -TUBO 32 mm
BG71392435	2 -TUBO 35 mm
BG71392438	2 -TUBO 38 mm



TAPON MACHO ORFS

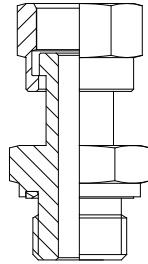
CÓDIGO	ROSCA
BG70450004	9/16
BG70450006	11/16
BG70450008	13/16
BG70450010	1
BG70450012	1.3/16
BG70450016	1.7/16
BG70450020	1.11/16
BG70450024	2



ASIENTO PLANO ORFS

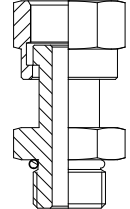
ADAPTADOR TL ORFS - MACHO GAS BSPP

CÓDIGO	ROSCA
BG70490402ED	TL 9/16 -MF 1/8 BSPP
BG70490404ED	TL 9/16 -MF 1/4 BSPP
BG70490604ED	TL 11/16 -MF 1/4 BSPP
BG70490606ED	TL 11/16 -MF 3/8 BSPP
BG70490804ED	TL 13/16 -MF 1/4 BSPP
BG70490806ED	TL 13/16 -MF 3/8 BSPP
BG70490808ED	TL 13/16 -MF 1/2 BSPP
BG70491008ED	TL 1 -MF 1/2 BSPP
BG70491012ED	TL 1 -MF 3/4 BSPP
BG70491208ED	TL 1.3/16 -MF 1/2 BSPP
BG70491212ED	TL 1.3/16 -MF 3/4 BSPP
BG70491612ED	TL 1.7/16 -MF 3/4 BSPP
BG70491616ED	TL 1.7/16 -MF 1 BSPP
BG70492016ED	TL 1.11/16 -MF 1 BSPP
BG70492020ED	TL 1.11/16-MF 1.1/4BSPP
BG70492424ED	TL 2 -MF 1.1/2 BSPP



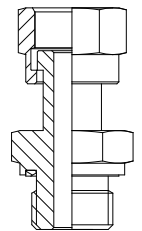
ADAPTADOR TL ORFS - MACHO MÉTRICO ISO 6149

CÓDIGO	ROSCA
BG70500404	MF 9/16 - TL 9/16
BG70500604	MF 11/16 - TL 9/16
BG70500606	MF 11/16 - TL 11/16
BG70500806	MF 13/16 - TL 11/16
BG70500808	MF 13/16 - TL 13/16
BG70501008	MF 1" - TL 13/16
BG70501010	MF 1" - TL 1"
BG70501210	MF 1.3/16 - TL 1"
BG70501212	MF 1.3/16 - TL 1.3/16
BG70501612	MF 1.7/16 - TL 1.3/16
BG70501616	MF 1.7/16 - TL 1.7/16
BG70502016	MF 1.11/16 - TL 1.7/16



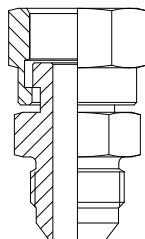
ADAPTADOR TL ORFS - MACHO MÉTRICO ISO 3852

CÓDIGO	ROSCA
BG71480412	TL 9/16 -MF M12X1.5
BG71480612	TL 11/16 -MF M12X1.5
BG71480614	TL 11/16 -MF M14X1.5
BG71480616	TL 11/16 -MF M16X1.5
BG71480816	TL 13/16 -MF M16X1.5
BG71480818	TL 13/16 -MF M18X1.5
BG71481022	TL 1 -MF M22X1.5
BG71481227	TL 1.3/16 -MF M27X2
BG71481633	TL 1.7/16 -MF M33X2
BG71482042	TL 1 11/16-MF M42X2
BG71482448	TL 2 -MF M48X2



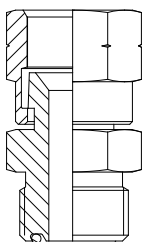
ADAPTADOR TL ORFS - MF JIC 37°

CÓDIGO	ROSCA
BG50500404	TL 9/16-MF 7/16 JIC
BG50500606	TL 11/16-MF 11/16 JIC
BG50500808	TL 13/16-MF 13/16 JIC
BG50501010	TL 1-MF 7/8 JIC
BG50501212	TL 1.3/16-MF 1.1/16 JIC
BG50501616	TL 1.7/16-MF 1.5/16 JIC



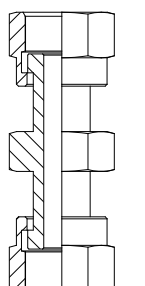
ADAPTADOR MACHO ORFS - TL JIC 37°

CÓDIGO	ROSCA
BG70400404	9/16 -TL 7/16 JIC
BG70400606	11/16 -TL 9/16 JIC
BG70400808	13/16 -TL 3/4 JIC
BG70401010	1 -TL 7/8 JIC
BG70401212	1.3/16 -TL 1.1/16 JIC
BG70401616	1.7/16 -TL 1.5/16 JIC



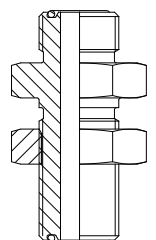
ADAPTADOR DOBLE TUERCA ORFS

CÓDIGO	ROSCA
BG70570004	9/16
BG70570006	11/16
BG70570008	13/16
BG70570010	1
BG70570012	1.3/16
BG70570016	1.7/16
BG70570020	1.11/16
BG70570024	2



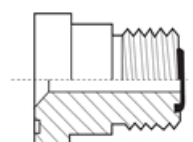
PASATABIQUES MACHO ORFS

CÓDIGO	ROSCA
BG70530004	9/16
BG70530006	11/16
BG70530008	13/16
BG70530010	1
BG70530012	1.3/16
BG70530016	1.7/16
BG70530020	1.11/16
BG70530024	2



ADAPTADOR MACHO ORFS - PLATINA SAE 3000 PSI

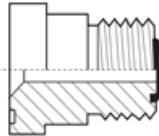
CÓDIGO	ROSCA
BG70510808	13/16 ORFS-PLAT. Ø30,2
BG70511212	1.3/16 ORFS-PLAT. Ø38.1
BG70511612	1.7/16 ORFS-PLAT. Ø44.5
BG70511616	1.7/16 ORFS-PLAT. Ø44,5
BG70512016	1.11/16 PLAT. Ø51
BG70512020	1.11/16 ORFS-PLAT. Ø51
BG70512424	2 ORFS-PLAT. Ø60



ASIENTO PLANO ORFS

ADAPTADOR MACHO ORFS - PLATINA SAE 6000 PSI

CÓDIGO	ROSCA
BG70520808	13/16 ORFS-PLAT. Ø31.7
BG70521212	1.3/16 ORFS-PLAT. Ø41.3
BG70521612	1.3/16 ORFS-PLAT. Ø47.6
BG70521616	1.7/16 ORFS-PLAT. Ø47.6
BG70522016	1.7/16 ORFS-PLAT. Ø54
BG70522020	1.11/16 ORFS-PLAT. Ø54
BG70522424	2 ORFS-PLAT. Ø63.5



JUNTA TÓRICA

CÓDIGO	ROSCA
BG70630004	7.65x1.78
BG70630006	9.25x1.78
BG70630008	12.42x1.78
BG70630010	15.6x1.78
BG70630012	18.77x1.78
BG70630016	23.52x1.78
BG70630020	29.87x1.78
BG70630024	37.82x1.78



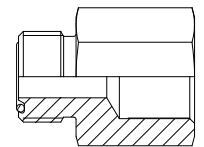
TUERCA PASATABIQUES

CÓDIGO	ROSCA
BG70650004	9/16
BG70650006	11/16
BG70650008	13/16
BG70650010	1
BG70650012	1.3/16
BG70650016	1.7/16
BG70650020	1.11/16
BG70650024	2



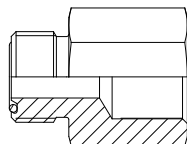
RACOR P/MANOM.-TOMA PRESIÓN MF ORFS-HF BSPP

CÓDIGO	ROSCA
BG70900404	MF 9/16 -1/4 BSPP
BG70900408	MF 9/16 -1/2 BSPP
BG70900604	MF 11/16 -1/4 BSPP
BG70900608	MF 11/16 -1/2 BSPP
BG70900804	MF 13/16 -1/4 BSPP
BG70900808	MF 13/16 -1/8 BSPP



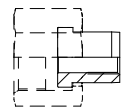
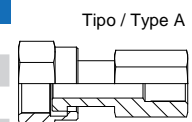
RACOR P/MANOM.-TOMA PRES.MF ORFS-HF MÉTR. ISO 6149

CÓDIGO	ROSCA
BG70900414	MF 9/16 -M14x1.5
BG70900614	MF 11/16 -M14x1.5
BG70900814	MF 13/16 -M14x1.5
BG70901014	MF 1 -M14x1.5
BG70901214	MF 1.3/16 -M14x1.5



RACOR P/TOMA PRESIÓN TL ORFS-HF BSPP

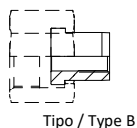
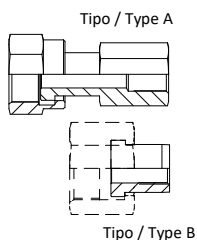
CÓDIGO	ROSCA
BG70910404	TL 9/16 -HF 1/4 BSPP
BG70910604	TL 11/16 -HF 1/4 BSPP
BG70910804	TL 13/16 -HF 1/4 BSPP
BG70911004	TL 1 -HF 1/4 BSPP
BG70911204	TL 1.3/16 -HF 1/4 BSPP
BG70911604	TL 1.7/16 -HF 1/4 BSPP
BG70912004	TL 1.11/16 -HF 1/4 BSPP
BG70912404	TL 2 -HF 1/4 BSPP



Tipo / Type B

RACOR P/MANOM.-TOMA PRES.MF ORFS-HF MÉTR. DIN 3852

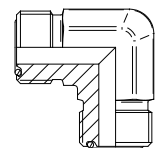
CÓDIGO	ROSCA
BG70920410	TL 9/16 -HF M10x1
BG70920610	TL 11/16 -HF M10x1
BG70920810	TL 13/16 -HF M10x1
BG70921010	TL 1 -HF M10x1
BG70921210	TL 1.3/16 -HF M10x1
BG70921610	TL 1.7/16 -HF M10x1
BG70922010	TL 1.11/16 -HF M10x1
BG70922410	TL 2 -HF M10x1



Tipo / Type B

CODO 90° MACHO - MACHO ORFS

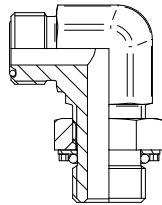
CÓDIGO	ROSCA
BG74010004	MF-MF 9/16
BG74010006	MF-MF 11/16
BG74010008	MF-MF 13/16
BG74010010	MF-MF 1
BG74010012	MF-MF 1.3/16
BG74010016	MF-MF 1.7/16
BG74010020	MF-MF 1.11/16
BG74010024	MF-MF 2



ASIENTO PLANO ORFS

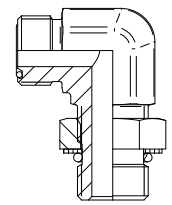
CODO 90° MACHO ORFS-ORIENTABLE MACHO BSPP

CÓDIGO	ROSCA
BG74050402	9/16 -ORIENT. 1/8 BSPP
BG74050404	9/16 -ORIENT. 1/4 BSPP
BG74050406	9/16 -ORIENT. 3/8 BSPP
BG74050604	11/16 -ORIENT. 1/4 BSPP
BG74050606	11/16 -ORIENT. 3/8 BSPP
BG74050608	11/16 -ORIENT. 1/2 BSPP
BG74050804	13/16 -ORIENT. 1/4 BSPP
BG74050806	13/16 -ORIENT. 3/8 BSPP
BG74050808	13/16 -ORIENT. 1/2 BSPP
BG74050812	13/16 -ORIENT. 3/4 BSPP
BG74051006	1 -ORIENT. 3/8 BSPP
BG74051008	1 -ORIENT. 1/2 BSPP
BG74051012	1 -ORIENT. 3/4 BSPP
BG74051016	1 -ORIENT. 1 BSPP
BG74051206	1.3/16 -ORIENT. 3/8 BSPP
BG74051208	1.3/16 -ORIENT. 1/2 BSPP
BG74051212	1.3/16 -ORIENT. 3/4 BSPP
BG74051216	1.3/16 -ORIENT. 1 BSPP
BG74051612	1.7/16 -ORIENT. 3/4 BSPP
BG74051616	1.7/16 -ORIENT. 1 BSPP
BG74051620	1.7/16 -ORIENT. 1.1/4 BSPP
BG74052016	1.11/16 -ORIENT. 1 BSPP
BG74052020	1.11/16 -ORIENT. 1.1/4 BSPP
BG74052024	1.11/16 -ORIENT. 1.1/2 BSPP
BG74052424	2 -ORIENT. 1.1/2 BSPP



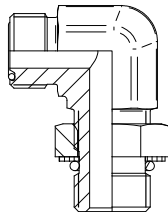
CODO 90° MACHO ORFS-ORIENTABLE MACHO UNF

CÓDIGO	ROSCA
BG74060404	9/16 -ORIENT. 7/16 UNF
BG74060406	9/16 -ORIENT. 9/16 UNF
BG74060604	11/16 -ORIENT. 7/16 UNF
BG74060606	11/16 -ORIENT. 9/16 UNF
BG74060608	11/16 -ORIENT. 3/4 UNF
BG74060610	11/16 -ORIENT. 7/8 UNF
BG74060806	13/16 -ORIENT. 9/16 UNF
BG74060808	13/16 -ORIENT. 3/4 UNF
BG74060810	13/16 -ORIENT. 7/8 UNF
BG74060812	13/16 -ORIENT. 1 1/16 UNF
BG74061008	1 -ORIENT. 3/4 UNF
BG74061010	1 -ORIENT. 7/8 UNF
BG74061012	1 -ORIENT. 1 1/16 UNF
BG74061208	1.3/16 -ORIENT. 3/4 UNF
BG74061210	1.3/16 -ORIENT. 7/8 UNF
BG74061212	1.3/16 -ORIENT. 1.1/16 UNF
BG74061216	1.3/16 -ORIENT. 1.5/16 UNF
BG74061612	1.7/16 -ORIENT. 1.1/16 UNF
BG74061616	1.7/16 -ORIENT. 1.5/16 UNF
BG74061620	1.7/16 -ORIENT. 1.5/8 UNF
BG74062016	1.11/16 -ORIENT. 1.5/16 UNF
BG74062020	1.11/16 -ORIENT. 1.5/8 UNF
BG74062024	1.11/16 -ORIENT. 1.7/8 UNF
BG74062420	2 -ORIENT. 1.5/8 UNF
BG74062424	2 -ORIENT. 1.7/8 UNF



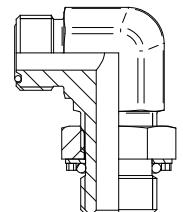
CD 90° MACHO ORFS-ORIENT. MACHO METRICO ISO 6149

CÓDIGO	ROSCA
BG74070412	9/16 -ORIENT. M12x1.5
BG74070414	9/16 -ORIENT. M14x1.5
BG74070612	11/16 -ORIENT. M12x1.5
BG74070614	11/16 -ORIENT. M14x1.5
BG74070616	11/16 -ORIENT. M16x1.5
BG74070814	13/16 -ORIENT. M14x1.5
BG74070818	13/16 -ORIENT. M18x1.5
BG74070822	13/16 -ORIENT. M22x1.5
BG74071018	1 -ORIENT. M18x1.5
BG74071022	1 -ORIENT. M22x1.5
BG74071222	1.3/16 -ORIENT. M22x1.5
BG74071227	1.3/16 -ORIENT. M27x2
BG74071633	1.7/16 -ORIENT. M33x2
BG74072033	1.11/16 -ORIENT. M33x2
BG74072042	1.11/16 -ORIENT. M42x2
BG74072448	2 -ORIENT. M48x2



CD 90° MACHO ORFS-ORIENT. MACHO METRICO DIN 3852

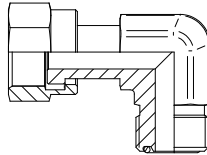
CÓDIGO	ROSCA
BG74170414	9/16 -ORIENT. M14x1.5
BG74170612	11/16 -ORIENT. M12x1.5
BG74170614	11/16 -ORIENT. M14x1.5
BG74170616	11/16 -ORIENT. M16x1.5
BG74170814	13/16 -ORIENT. M14x1.5
BG74170818	13/16 -ORIENT. M18x1.5
BG74170822	13/16 -ORIENT. M22x1.5
BG74171018	1 -ORIENT. M18x1.5
BG74171022	1 -ORIENT. M22x1.5
BG74171222	1.3/16 -ORIENT. M22x1.5
BG74171227	1.3/16 -ORIENT. M27x2
BG74171633	1.7/16 -ORIENT. M33x2
BG74172033	1.11/16 -ORIENT. M33x2
BG74172042	1.11/16 -ORIENT. M42x2
BG74172448	2 -ORIENT. M48x2



ASIENTO PLANO ORFS

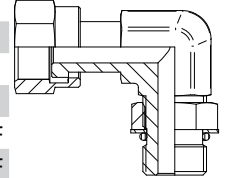
CODO 90° MACHO - TUERCA LOCA ORFS

CÓDIGO	ROSCA
BG74090004	MF-TL 9/16
BG74090006	MF-TL 11/16
BG74090008	MF-TL 13/16
BG74090010	MF-TL 1
BG74090012	MF-TL 1.3/16
BG74090016	MF-TL 1.7/16
BG74090020	MF-TL 1.11/16
BG74090024	MF-TL 2



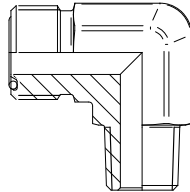
CODO 90° TUERCA LOCA ORFS -ORIENTABLE UNF 2A

CÓDIGO	ROSCA
BG74100404	TL 9/16 -ORIENT. 7/16 UNF
BG74100606	TL 11/16 -ORIENT. 9/16 UNF
BG74100808	TL 13/16 -ORIENT. 3/4 UNF
BG74101010	TL 1 -ORIENT. 7/8 UNF
BG74101212	TL 1.3/16 -ORIENT. 1.1/16 UNF
BG74101616	TL 1.7/16 -ORIENT. 1.5/16 UNF
BG74102020	TL 1.11/16 -ORIENT. 1.5/8 UNF
BG74102424	TL 2 -ORIENT. 1.7/8 UNF



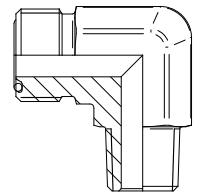
CODO 90° MACHO ORFS - NPTF

CÓDIGO	ROSCA
BG74110404	9/16 ORFS - 1/4 NPTF
BG74110604	11/16 ORFS - 1/4 NPTF
BG74110606	11/16 ORFS - 3/8 NPTF
BG74110608	11/16 ORFS - 1/2 NPTF
BG74110806	13/16 ORFS - 3/8 NPTF
BG74110808	13/16 ORFS - 1/2 NPTF
BG74110812	13/16 ORFS - 3/4 NPTF
BG74111008	1 ORFS - 1/2 NPTF
BG74111012	1 ORFS - 3/4 NPTF
BG74111208	1.3/16 ORFS - 1/2 NPTF
BG74111212	1.3/16 ORFS - 3/4 NPTF
BG74111216	1.3/16 ORFS - 1 NPTF
BG74111612	1.7/16 ORFS - 3/4 NPTF
BG74111616	1.7/16 ORFS - 1 NPTF
BG74112020	1.11/16 ORFS - 1.1/4 NPTF
BG74112424	2 ORFS - 1.1/2 NPTF



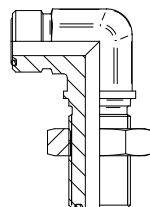
CODO 90° MACHO ORFS - BSPT (GAS CÓNICO)

CÓDIGO	ROSCA
BG74120402	MF 9/16 -1/8 BSPT
BG74120404	MF 9/16 -1/4 BSPT
BG74120604	MF 11/16 -1/4 BSPT
BG74120606	MF 11/16 -3/8 BSPT
BG74120608	MF 11/16 -1/2 BSPT
BG74120806	MF 13/16 -3/8 BSPT
BG74120808	MF 13/16 -1/2 BSPT
BG74120812	MF 13/16 -3/4 BSPT
BG74121008	MF 1 -1/2 BSPT
BG74121012	MF 1 -3/4 BSPT
BG74121208	MF 1.3/16 -1/2 BSPT
BG74121212	MF 1.3/16 -3/4 BSPT
BG74121216	MF 1.3/16 -1 BSPT
BG74121612	MF 1.7/16 -3/4 BSPT
BG74121616	MF 1.7/16 -1 BSPT
BG74122020	MF 1.11/16 -1.1/4 BSPT
BG74122424	MF 2 -1.1/2 BSPT



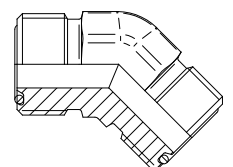
CODO 90° PASATABIQUES MACHO-MACHO ORFS

CÓDIGO	ROSCA
BG74130004	9/16
BG74130006	11/16
BG74130008	13/16
BG74130010	1
BG74130012	1.3/16
BG74130016	1.7/16
BG74130020	1.11/16
BG74130024	2



CODO 45° MACHO-MACHO ORFS

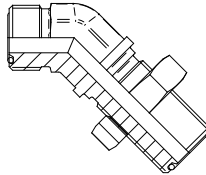
CÓDIGO	ROSCA
BG74410004	9/16
BG74410006	11/16
BG74410008	13/16
BG74410010	1
BG74410012	1.3/16
BG74410016	1.7/16
BG74410020	1.11/16
BG74410024	2



ASIENTO PLANO ORFS

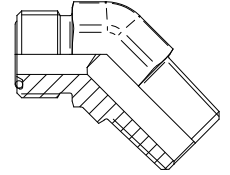
CODO 45° PASATABIQUES MACHO-MACHO ORFS

CÓDIGO	ROSCA
BG74420004	9/16
BG74420006	11/16
BG74420008	13/16
BG74420010	1
BG74420012	1.3/16
BG74420016	1.7/16
BG74420020	1.11/16
BG74420024	2



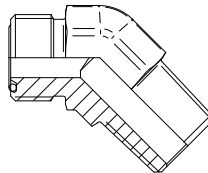
CODO 45° MACHO ORFS-MACHO NPTF

CÓDIGO	ROSCA
BG74430402	9/16 -1/8 NPTF
BG74430404	9/16 -1/4 NPTF
BG74430604	11/16 -1/4 NPTF
BG74430606	11/16 -3/8 NPTF
BG74430806	13/16 -3/8 NPTF
BG74430808	13/16 -1/2 NPTF
BG74431008	1 -1/2 NPTF
BG74431012	1 -3/4 NPTF
BG74431212	1.3/16 -3/4 NPTF
BG74431616	1.7/16 -1 NPTF
BG74432020	1.11/16 -1.1/4 NPTF
BG74432424	2 -1.1/2 NPTF



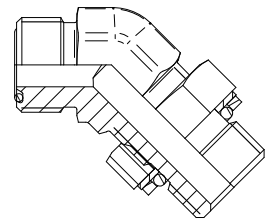
CODO 45° MACHO ORFS-MACHO BSPT

CÓDIGO	ROSCA
BG74440402	MF 9/16 -1/8 BSPT
BG74440404	MF 9/16 -1/4 BSPT
BG74440604	MF 11/16 -1/4 BSPT
BG74440606	MF 11/16 -3/8 BSPT
BG74440806	MF 13/16 -3/8 BSPT
BG74440808	MF 13/16 -1/2 BSPT
BG74441008	MF 1 -1/2 BSPT
BG74441012	MF 1 -3/4 BSPT
BG74441212	MF 1.3/16 -3/4 BSPT
BG74441616	MF 1.7/16 -1 BSPT
BG74442020	MF 1.11/16 -1.1/4 BSPT
BG74442424	MF 2 -1.1/2 BSPT



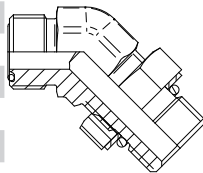
CODO 45° MACHO ORFS-ORIENTABLE MACHO BSPP

CÓDIGO	ROSCA
BG74450402	9/16 -ORIENT. 1/8 BSPP
BG74450404	9/16 -ORIENT. 1/4 BSPP
BG74450604	11/16 -ORIENT. 1/4 BSPP
BG74450606	11/16 -ORIENT. 3/8 BSPP
BG74450608	11/16 -ORIENT. 1/2 BSPP
BG74450806	13/16 -ORIENT. 3/8 BSPP
BG74450808	13/16 -ORIENT. 1/2 BSPP
BG74451008	1 -ORIENT. 1/2 BSPP
BG74451012	1 -ORIENT. 3/4 BSPP
BG74451212	1.3/16 -ORIENT. 3/4 BSPP
BG74451216	1.3/16 -ORIENT. 1 BSPP
BG74451616	1.7/16 -ORIENT. 1 BSPP
BG74452020	1.11/16 -ORIENT. 1.1/4 BSPP
BG74452424	2 -ORIENT. 1.1/2 BSPP



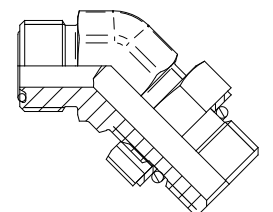
ADAPTADORES ASIENTO PLANO ORFS

CÓDIGO	ROSCA
BG74460404	9/16 -ORIENT. 7/16 UNF
BG74460406	9/16 -ORIENT. 9/16 UNF
BG74460604	11/16 -ORIENT. 7/16 UNF
BG74460606	11/16 -ORIENT. 9/16 UNF
BG74460608	11/16 -ORIENT. 3/4 UNF
BG74460806	13/16 -ORIENT. 9/16 UNF
BG74460808	13/16 -ORIENT. 3/4 UNF
BG74460810	13/16 -ORIENT. 7/8 UNF
BG74461008	1 -ORIENT. 3/4 UNF
BG74461010	1 -ORIENT. 7/8 UNF
BG74461012	1 -ORIENT. 1.1/16 UNF
BG74461210	1.3/16 -ORIENT. 7/8 UNF
BG74461212	1.3/16 -ORIENT. 1.1/16 UNF
BG74461216	1.3/16 -ORIENT. 1.5/16 UNF
BG74461612	1.7/16 -ORIENT. 1.1/16 UNF
BG74461616	1.7/16 -ORIENT. 1.5/16 UNF
BG74461620	1.7/16 -ORIENT. 1.5/8 UNF
BG74462020	1.11/16 -ORIENT. 1.5/8 UNF
BG74462424	2 -ORIENT. 1.7/8 UNF



CD 45° MACHO ORFS-ORIENT. MACHO METRICO ISO 6149

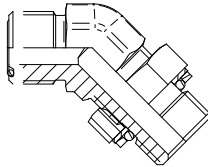
CÓDIGO	ROSCA
BG74470412	9/16 -ORIENT. M12x1.5
BG74470414	9/16 -ORIENT. M14x1.5
BG74470614	11/16 -ORIENT. M14x1.5
BG74470616	11/16 -ORIENT. M16x1.5
BG74470814	13/16 -ORIENT. M14x1.5
BG74470818	13/16 -ORIENT. M18x1.5
BG74470822	13/16 -ORIENT. M22x1.5
BG74471018	1 -ORIENT. M18x1.5
BG74471022	1 -ORIENT. M22x1.5
BG74471227	1.3/16 -ORIENT. M27x2
BG74471633	1.7/16 -ORIENT. M33x2
BG74472042	1.11/16 -ORIENT. M42x2
BG74472448	2 -ORIENT. M42x2



ASIENTO PLANO ORFS

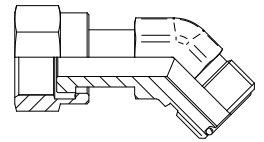
CD 45° MACHO ORFS-ORIENT. MACHO METRICO ISO 3852

CÓDIGO	ROSCA
BG74480412	9/16 -ORIENT. M12x1.5
BG74480414	9/16 -ORIENT. M14x1.5
BG74480614	11/16 -ORIENT. M14x1.5
BG74480616	11/16 -ORIENT. M16x1.5
BG74480814	13/16 -ORIENT. M14x1.5
BG74480818	13/16 -ORIENT. M18x1.5
BG74480822	13/16 -ORIENT. M22x1.5
BG74481018	1 -ORIENT. M18x1.5
BG74481022	1 -ORIENT. M22x1.5
BG74481227	1.3/16 -ORIENT. M22x2
BG74481633	1.7/16 -ORIENT. M33x2
BG74482042	1.11/16 -ORIENT. M42x2
BG74482448	2 -ORIENT. M48x2



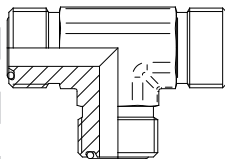
CODO 45° MACHO ORFS-TL ORFS

CÓDIGO	ROSCA
BG74490004	MF-TL 9/16
BG74490006	MF-TL 11/16
BG74490008	MF-TL 13/16
BG74490010	MF-TL 1
BG74490012	MF-TL 1.3/16
BG74490016	MF-TL 1.7/16
BG74490020	MF-TL 1.11/16
BG74490024	MF-TL 2



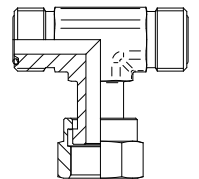
TE MACHO ORFS M-M-M

CÓDIGO	ROSCA
BG74510004	TE MACHO 9/16
BG74510006	TE MACHO 11/16
BG74510008	TE MACHO 13/16
BG74510010	TE MACHO 1
BG74510012	TE MACHO 1.3/16
BG74510016	TE MACHO 1.7/16
BG74510020	TE MACHO 1.11/16
BG74510024	TE MACHO 2



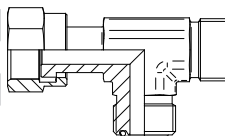
TE MACHO-TL CENTRAL ORFS M-TL-M

CÓDIGO	ROSCA
BG74550004	TE MF-TL CENTRAL 9/16
BG74550006	TE MF-TL CENTRAL 11/16
BG74550008	TE MF-TL CENTRAL 13/16
BG74550010	TE MF-TL CENTRAL 1
BG74550012	TE MF-TL CENTRAL 1.3/16
BG74550016	TE MF-TL CENTRAL 1.7/16
BG74550020	TE MF-TL CENTRAL 1.11/16
BG74550024	TE MF-TL CENTRAL 2



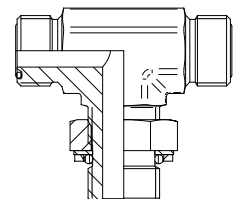
TE MACHO-TL LATERAL ORFS M-M-TL

CÓDIGO	ROSCA
BG74590004	TE MF-TL LATERAL 9/16
BG74590006	TE MF-TL LATERAL 11/16
BG74590008	TE MF-TL LATERAL 13/16
BG74590010	TE MF-TL LATERAL 1
BG74590012	TE MF-TL LATERAL 1.3/16
BG74590016	TE MF-TL LATERAL 1.7/16
BG74590020	TE MF-TL LATERAL 1.11/16
BG74590024	TE MF-TL LATERAL 2



TE ORIENTABLE CENTRAL ORFS - GAS BSPP

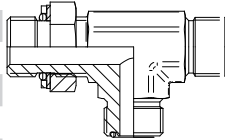
CÓDIGO	ROSCA
BG74610402	9/16 -1/8 BSPP
BG74610404	9/16 -1/4 BSPP
BG74610604	11/16 -1/4 BSPP
BG74610606	11/16 -3/8 BSPP
BG74610806	13/16 -3/8 BSPP
BG74610808	13/16 -1/2 BSPP
BG74611008	1 -1/2 BSPP
BG74611012	1 -3/4 BSPP
BG74611212	1.3/16 -3/4 BSPP
BG74611616	1.7/16 -1 BSPP
BG74612020	1.11/16 -1.1/4 BSP
BG74612424	2 -1.1/2 BSPP



ASIENTO PLANO ORFS

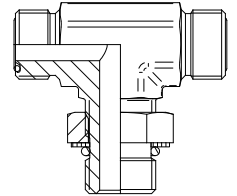
TE ORIENTABLE LATERAL ORFS - GAS (BSPP)

CÓDIGO	ROSCA
BG74630402	LATERAL 9/16 -1/8 BSPP
BG74630404	LATERAL 9/16 -1/4 BSPP
BG74630604	LATERAL 11/16 -1/4 BSPP
BG74630606	LATERAL 11/16 -3/8 BSPP
BG74630806	LATERAL 13/16 -3/8 BSPP
BG74630808	LATERAL 13/16 -1/2 BSPP
BG74631008	LATERAL 1 -1/2 BSPP
BG74631012	LATERAL 1 -3/4 BSPP
BG74631212	LATERAL 1.3/16 -3/4 BSPP
BG74631616	LATERAL 1.7/16 -1 BSPP
BG74632020	LATERAL 1.11/16 -1.1/4 BSP
BG74632424	LATERAL 2 -1.1/2 BSPP



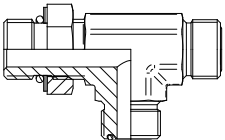
TE ORIENTABLE CENTRAL ORFS - UNF 2A

CÓDIGO	ROSCA
BG74650404	9/16 -7/16 UNF 2A
BG74650606	11/16 -9/16 UNF 2A
BG74650808	13/16 -3/4 UNF 2A
BG74651010	1 -7/8 UNF 2A
BG74651212	1.3/16 -1.1/16 UNF 2A
BG74651616	1.7/16 -1.5/16 UNF 2A
BG74652020	1.11/16 -1.5/8 UN 2A
BG74652424	2 -1.7/8 UNF 2A



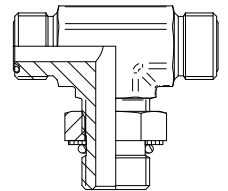
TE ORIENTABLE LATERAL ORFS - UNF 2A

CÓDIGO	ROSCA
BG74670404	9/16 -7/16 UNF 2A
BG74670606	11/16 -9/16 UNF 2A
BG74670808	13/16 -3/4 UNF 2A
BG74671010	1 -7/8 UNF 2A
BG74671212	1.3/16 -1.1/16 UNF 2A
BG74671616	1.7/16 -1.5/16 UNF 2A
BG74672020	1.11/16 -1.5/8 UNF 2A
BG74672424	2 -1.7/8 UNF 2A



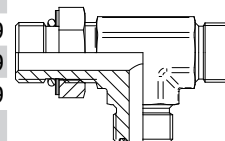
TE ORIENTABLE CENTRAL ORFS - METRICO ISO 6149

CÓDIGO	ROSCA
BG74620412	9/16 -M12x1,5 ISO 6149
BG74620414	9/16 -M14x1,5 ISO 6149
BG74620614	11/16 -M14x1,5 ISO 6149
BG74620616	11/16 -M16x1,5 ISO 6149
BG74620818	13/16 -M18x1,5 ISO 6149
BG74621022	1 -M22x1.5 ISO 6149
BG74621227	1.3/16 -M27x2 ISO 6149
BG74621633	1.7/16 -M33x2 ISO 6149
BG74622042	1.11/16 -M42x2 ISO 6149
BG74622448	2 -M48x2 ISO 6149



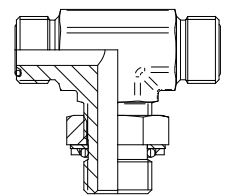
TE ORIENTABLE LATERAL ORFS - MÉTRICO ISO 6149

CÓDIGO	ROSCA
BG74640412	9/16 -M12x1.5 ISO 6149
BG74640414	9/16 -M14x1.5 ISO 6149
BG74640614	11/16 -M14x1.5 ISO 6149
BG74640616	11/16 -M16x1.5 ISO 6149
BG74640818	13/16 -M18x1.5 ISO 6149
BG74641022	1 -M22x1.5 ISO 6149
BG74641227	1.3/16 -M27x2 ISO 6149
BG74641633	1.7/16 -M33x2 ISO 6149
BG74642042	1.11/16 -M42x2 ISO 6149
BG74642448	2 -M48x2 ISO 6149



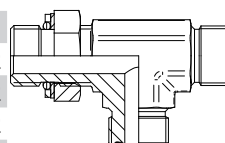
TE ORIENTABLE CENTRAL ORFS - MÉTRICO DIN 3852

CÓDIGO	ROSCA
BG74660412	9/16 -M12x1.5 DIN 3852
BG74660414	9/16 -M14x1.5 DIN 3852
BG74660614	11/16 -M14x1.5 DIN 3852
BG74660616	11/16 -M16x1.5 DIN 3852
BG74660818	13/16 -M18x1.5 DIN 3852
BG74661022	1 -M22x1.5 DIN 3852
BG74661227	1.3/16 -M27x2 DIN 3852
BG74661633	1.7/16 -M33x2 DIN 3852
BG74662042	1.11/16 -M42x2 DIN 3852
BG74662448	2 -M48x2 DIN 3852



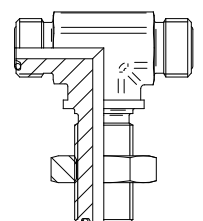
TE ORIENTABLE LATERAL ORFS - MÉTRICO DIN 3852

CÓDIGO	ROSCA
BG74680412	9/16 -M12x1.5 DIN 3852
BG74680414	9/16 -M14x1.5 DIN 3852
BG74680614	11/16 -M14x1.5 DIN 3852
BG74680616	11/16 -M16x1.5 DIN 3852
BG74680818	13/16 -M18x1.5 DIN 3852
BG74681022	1 -M22x2 DIN 3852
BG74681227	1.3/16 -M27x2 DIN 3852
BG74681633	1.7/16 -M33x2 DIN 3852
BG74682042	1.11/16 -M42x2 DIN 3852
BG74682448	2 -M48x2 DIN 3852



TE PASATABIQUES CENTRAL TUBO-TUBO ORFS

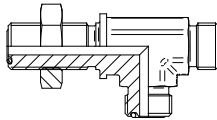
CÓDIGO	ROSCA
BG74730004	9/16
BG74730006	11/16
BG74730008	13/16
BG74730010	1
BG74730012	1.3/16
BG74730016	1.7/16
BG74730020	1.11/16
BG74730024	2



ASIENTO PLANO ORFS

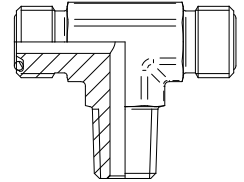
TE PASTABIQUES LATERAL TUBO - TUBO ORFS

CÓDIGO	ROSCA
BG74740004	9/16
BG74740006	11/16
BG74740008	13/16
BG74740010	1
BG74740012	1.3/16
BG74740016	1.7/16
BG74740020	1.11/16
BG74740024	2



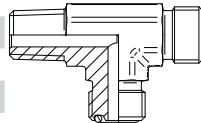
TE MACHO ORFS MF NTF CENTRAL

CÓDIGO	ROSCA
BG74810402	MF 9/16 -MF 1/8 NPTF
BG74810404	MF 9/16 -MF 1/4 NPTF
BG74810604	MF 11/16 -MF 1/4 NPTF
BG74810606	MF 11/16 -MF 3/8 NPTF
BG74810806	MF 13/16 -MF 3/8 NPTF
BG74810808	MF 13/16 -MF 1/2 NPTF
BG74811008	MF 1 -MF 1/2 NPTF
BG74811212	MF 1.3/16 -MF 3/4 NPTF
BG74811616	MF 1.7/16 -MF 1 NPTF
BG74812020	MF 1.11/16 -MF 1.1/4 NPTF
BG74812424	MF 2 -MF 1.1/2 NPTF



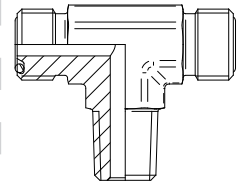
TE MACHO ORFS MF NTF LATERAL

CÓDIGO	ROSCA
BG74830402	MF 9/16 -MF 1/8 NPTF
BG74830404	MF 9/16 -MF 1/4 NPTF
BG74830604	MF 11/16 -MF 1/4 NPTF
BG74830606	MF 11/16 -MF 3/8 NPTF
BG74830806	MF 13/16 -MF 3/8 NPTF
BG74830808	MF 13/16 -MF 1/2 NPTF
BG74831008	MF 1 -MF 1/2 NPTF
BG74831212	MF 1.3/16 -MF 3/4 NPTF
BG74831616	MF 1.7/16 -MF 1 NPTF
BG74832020	MF 1.11/16 -MF 1.1/4 NPTF
BG74832424	MF 2 -MF 1.1/2 NPTF



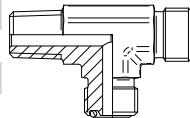
TE MACHO ORFS - MF BSPT CENTRAL (GAS CÓNICO)

CÓDIGO	ROSCA
BG74820402	MF 9/16 -MF 1/8 BSPT
BG74820404	MF 9/16 -MF 1/4 BSPT
BG74820604	MF 11/16 -MF 1/4 BSPT
BG74820606	MF 11/16 -MF 3/8 BSPT
BG74820806	MF 13/16 -MF 3/8 BSPT
BG74820808	MF 13/16 -MF 1/2 BSPT
BG74821008	MF 1 -MF 1/2 BSPT
BG74821212	MF 1.3/16 -MF 3/4 BSPT
BG74821616	MF 1.7/16 -MF 1 BSPT
BG74822020	MF 1.11/16 -MF 1.1/4 BSPT
BG74822424	MF 2 -MF 1.1/2 BSPT



TE MACHO ORFS - MF BSPT LATERAL (GAS CÓNICO)

CÓDIGO	ROSCA
BG74840404	MF 9/16 -MF 1/4 BSPT
BG74840604	MF 11/16 -MF 1/4 BSPT
BG74840606	MF 11/16 -MF 3/8 BSPT
BG74840806	MF 13/16 -MF 3/8 BSPT
BG74840808	MF 13/16 -MF 1/2 BSPT
BG74841008	MF 1 -MF 1/2 BSPT
BG74841212	MF 1.3/16 -MF 3/4 BSPT
BG74841616	MF 1.7/16 -MF 1 BSPT
BG74842020	MF 1.11/16 -MF 1.1/4 BSPT
BG74842424	MF 2 -MF 1.1/2 BSPT



CRUZ MACHO ORFS M-M-M-M

CÓDIGO	ROSCA
BG74900004	9/16
BG74900006	11/16
BG74900008	13/16
BG74900010	1
BG74900012	1.3/16
BG74900016	1.7/16
BG74900020	1.11/16
BG74900024	2

