

## CARATTERISTICHE

Luce nominale min/max	<b>Vedi Pag. 10</b>
Portata min/max	<b>Vedi Pag. 10</b>
Pressione di lavoro max.	<b>350 bar - 5075 PSI</b>
Rapporto di pilotaggio	<b>4 : 1</b>
Temperatura ambiente	<b>-30°C + 50°C</b>
Temperatura olio	<b>-30°C + 80°C</b>
Filtraggio consigliato	<b>50 micron</b>
Peso	<b>0.459 Kg. 1/4" GAS</b>
Peso	<b>0.750 Kg. 3/8" GAS</b>
Peso	<b>0.724 Kg. 1/2" GAS</b>

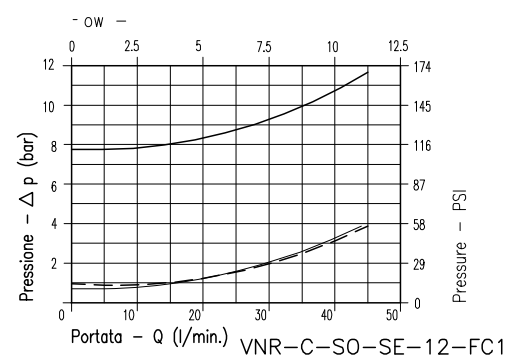
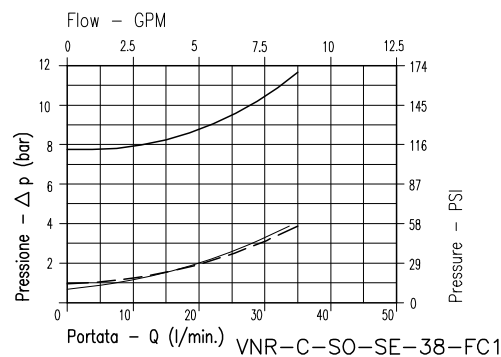
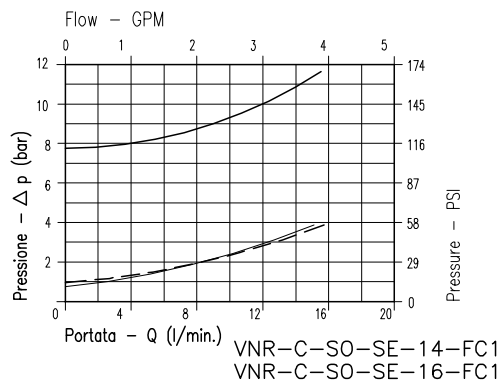
## PERFORMANCE

Min/max rated size
Min/max flow-rate
Max working pressure
Pilot ratio
Room temperature
Oil temperature
Recommended filtration
Weight
Weight
Weight

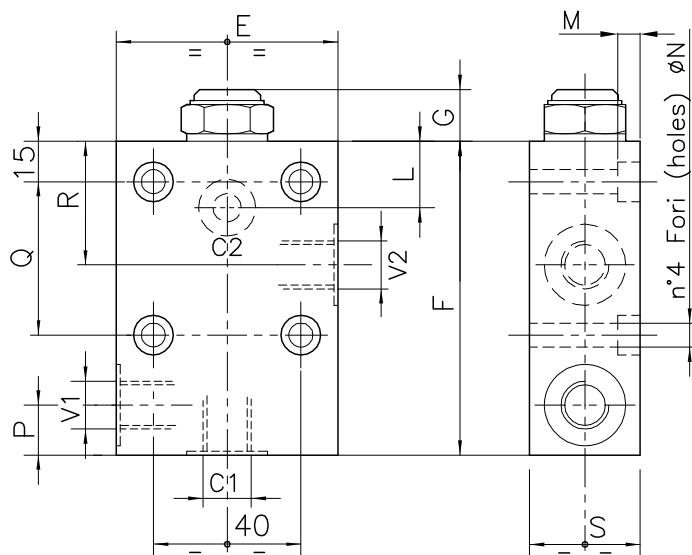
8Bar Flusso libero  
(free flow)

1Bar Flusso libero  
(free flow)

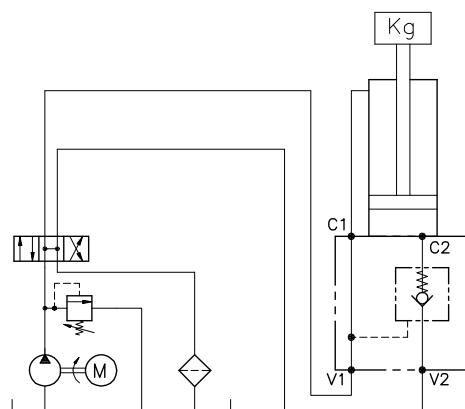
Flusso pilotato  
(piloted flow)



**Viscosità olio 46 cSt a 50°C / Oil viscosity 46 cSt at 50°C**



## ESEMPIO TIPICO DI CIRCUITO TYPICAL CIRCUIT EXAMPLE



## DIMENSIONI DIMENSIONS

NUMERO VALVOLA VALVE NUMBER	E	F	G	L	M	N	P	Q	R	S	Attacchi Port size V2-C2 V1-C1 GAS (BSPP)	Luce nominale Rated size DN	Portata max Max flow-rate l/min - GPM	REFERENCIA ROGIMAR
042	70	95	18	40	40	8.5	19	38	20.5	35	3/8"	6	35-9.2	VX0030420J0A
043	70	95	18	40	40	8.5	19	38	20.5	35	1/2"	8	45-12	VX0030430J0A

## CODICE DI ORDINAZIONE HOW TO ORDER

003

043

Numero valvola / Valve number

042

043

0

J

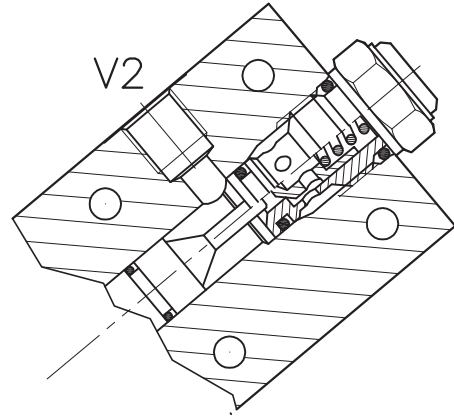
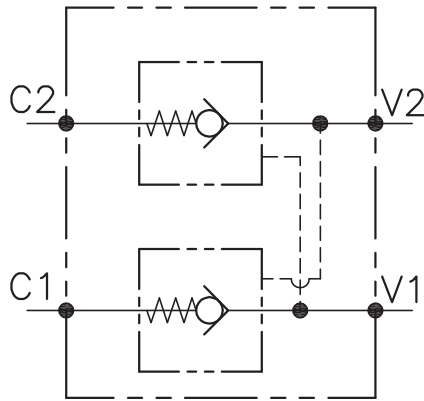
0

Omettere nella sigla valvola  
Do not use in valve code

- A O-RING sul pist. di pilotaggio  
Pilot piston O-RING
- O Senza O-RING sul pist. di pilotaggio  
No pilot piston O-RING

Inizio apertura  
Cracking pressure

- J 1 bar  
Molla (colore nero)  
Spring (black)
- W 6÷8 bar  
Molla (colore giallo)  
Spring (yellow)



## CARATTERISTICHE

Luce nominale min/max	<b>DN 6/10</b>
Portata min/max	<b>Vedi Pag. 12</b>
Pressione di lavoro max.	<b>350 bar - 5075 PSI</b>
Rapporto di pilotaggio	<b>4 : 1</b>
Temperatura ambiente	<b>-30°C + 50°C</b>
Temperatura olio	<b>-30°C + 80°C</b>
Filtraggio consigliato	<b>50 micron</b>
Peso	<b>0.450 Kg. 1/4" GAS</b>
Peso	<b>0.740 Kg. 3/8" GAS</b>
Peso	<b>0.724 Kg. 1/2" GAS</b>

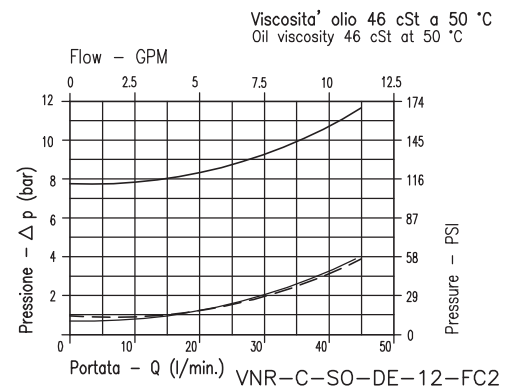
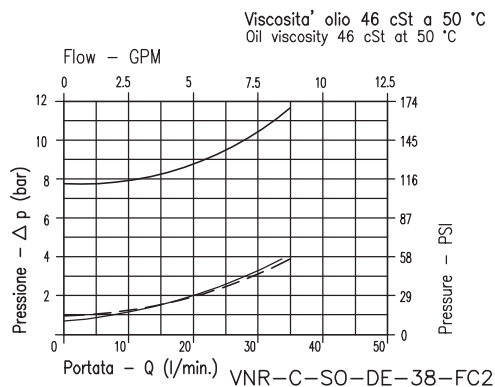
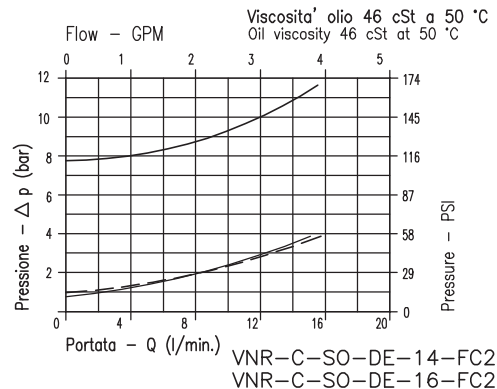
## PERFORMANCE

Min/max rated size
Min/max flow-rate
Max working pressure
Pilot ratio
Room temperature
Oil temperature
Recommended filtration
Weight
Weight
Weight

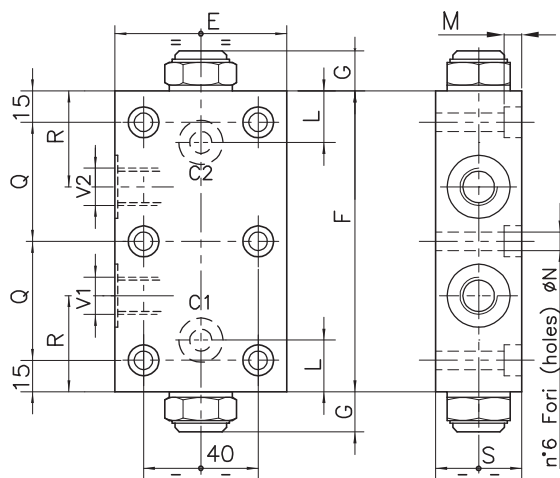
8Bar Flusso libero  
(free flow)

1Bar Flusso libero  
(free flow)

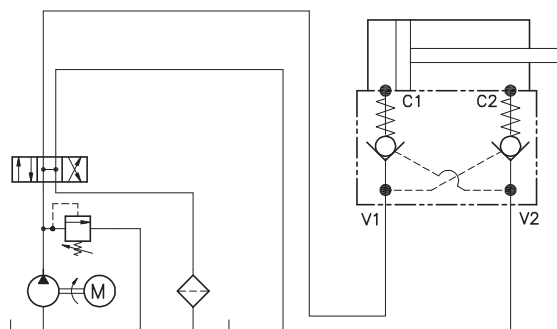
Flusso pilotato  
(piloted flow)



**Viscosità olio 46 cSt a 50°C / Oil viscosity 46 cSt at 50°C**



## ESEMPIO TIPICO DI CIRCUITO TYPICAL CIRCUIT EXAMPLE



## DIMENSIONI DIMENSIONS

NUMERO VALVOLA VALVE NUMBER	E	F	G	L	M	N	Q	R	S	Attacchi Port size V2-C2 V1-C1 GAS (BSPP)	Rapporto di pilotaggio Pilot Ratio	Portata max Max flow-rate l/min - GPM	REFERENCIA ROGIMAR
294	60	90	12	14	0	6.5	35	29	34.5	3/8"	5, 4:1	30-7.9	VX003294J0A
349	69	110	17	22.5	0	8.5	38	38	34.5	1/2"	4:1	45-12	VX003349J0A

## CODICE DI ORDINAZIONE HOW TO ORDER

003

349

0

J

0

Numero valvola / Valve number

294

349

Omettere nella sigla valvola  
Do not use in valve code

- A O-RING sul pist. di pilotaggio  
Pilot piston O-RING
- O Senza O-RING sul pist. di pilotaggio  
No pilot piston O-RING

Inizio apertura  
Cracking pressure

- J 1 bar  
Molla (colore nero)  
Spring (black)
- W 6-8 bar  
Molla (colore giallo)  
Spring (yellow)