

CARATTERISTICHE

| | |
|--------------------------|---------------------------|
| Luce nominale min/max | Vedi Pag. 6 |
| Portata min/max | Vedi Pag. 6 |
| Pressione di lavoro max. | 350 bar - 5075 PSI |
| Rapporto di pilotaggio | 4 : 1 |
| Temperatura ambiente | -30°C + 50°C |
| Temperatura olio | -30°C + 80°C |
| Filtraggio consigliato | 50 micron |
| Peso | 0.459 Kg. 1/4" GAS |
| Peso | 0.750 Kg. 3/8" GAS |
| Peso | 0.724 Kg. 1/2" GAS |

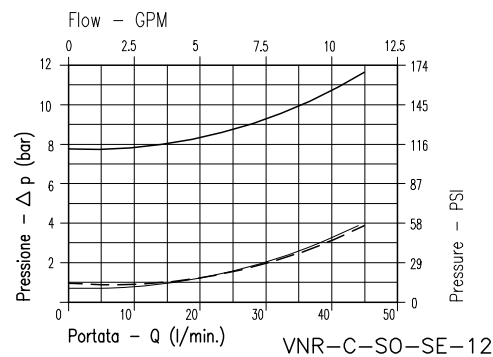
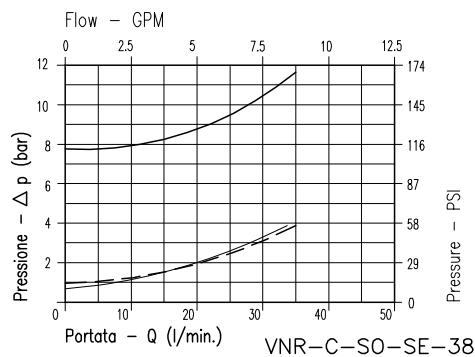
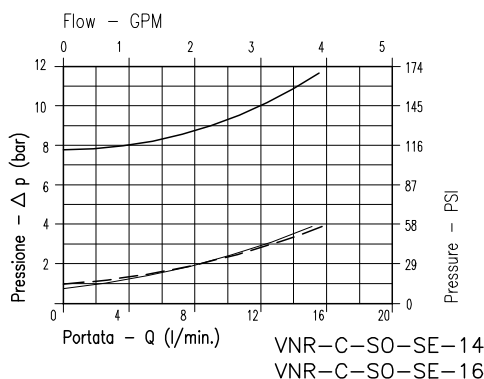
PERFORMANCE

| |
|------------------------|
| Min/max rated size |
| Min/max flow-rate |
| Max working pressure |
| Pilot ratio |
| Room temperature |
| Oil temperature |
| Recommended filtration |
| Weight |
| Weight |
| Weight |

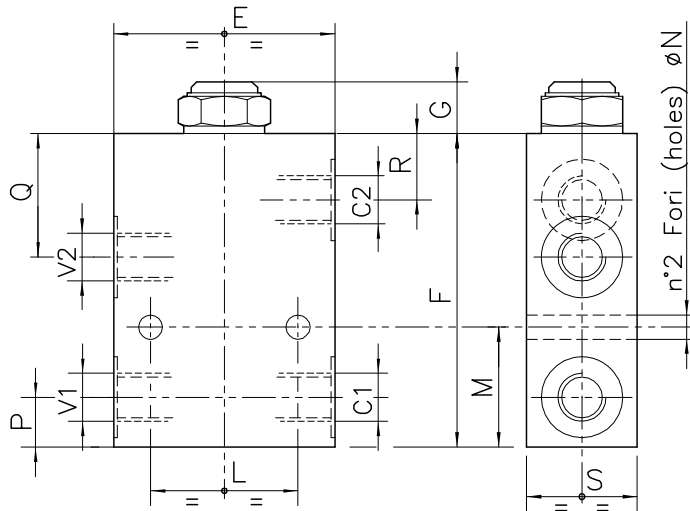
8Bar Flusso libero
(free flow)

1Bar Flusso libero
(free flow)

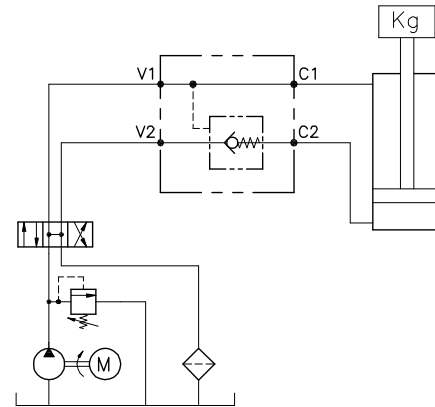
Flusso pilotato
(piloted flow)



Viscosità olio 46 cSt a 50°C / Oil viscosity 46 cSt at 50°C



**ESEMPIO TIPICO DI CIRCUITO
TYPICAL CIRCUIT EXAMPLE**



DIMENSIONI DIMENSIONS

| NUMERO VALVOLA VALVE NUMBER | E | F | G | L | M | N | P | Q | R | S | Attacchi Port size V2-C2 V1-C1 GAS (BSPP) | Luce nominale Rated size DN | Portata max Max flow-rate l/min - GPM | REFERENCIA ROGIMAR |
|--------------------------------|----|----|----|----|----|-----|----|----|------|----|---|--------------------------------------|---|-----------------------|
| 038 | 70 | 95 | 18 | 40 | 40 | 8.5 | 19 | 38 | 20.5 | 35 | 3/8" | 6 | 35-9.2 | VX33102 |
| 039 | 70 | 95 | 18 | 40 | 40 | 8.5 | 19 | 38 | 20.5 | 35 | 1/2" | 8 | 45-12 | VX33103 |

CODICE DI ORDINAZIONE HOW TO ORDER

003

038

0

J

0

Numero valvola / Valve number

038

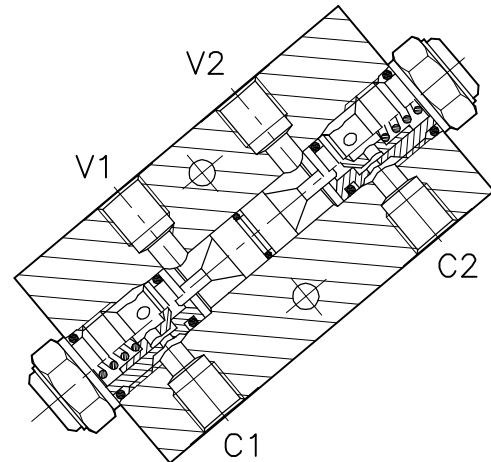
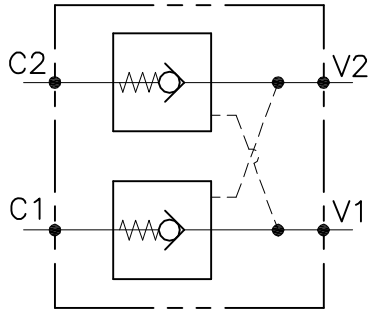
039

Omettere nella sigla valvola
Do not use in valve code

- A O-RING sul pist. di pilotaggio
Pilot piston O-RING
- O Senza O-RING sul pist. di pilotaggio
No pilot piston O-RING

Inizio apertura
Cracking pressure

- J 1 bar
Molla (colore nero)
Spring (black)
- W 6÷8 bar
Molla (colore giallo)
Spring (yellow)



CARATTERISTICHE

| | |
|--------------------------|---------------------------|
| Luce nominale min/max | Ver Pag. 8 |
| Portata min/max | Ver Pag. 8 |
| Pressione di lavoro max. | 350 bar - 5075 PSI |
| Rapporto di pilotaggio | 4 : 1 |
| Temperatura ambiente | -30°C + 50°C |
| Temperatura olio | -30°C + 80°C |
| Filtraggio consigliato | 50 micron |
| Peso | 0.610 Kg. 1/4" GAS |
| Peso | 0.981 Kg. 3/8" GAS |
| Peso | 0.957 Kg. 1/2" GAS |

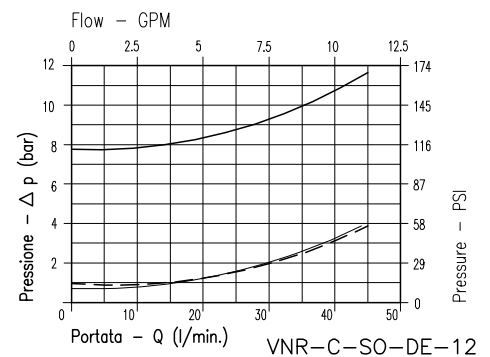
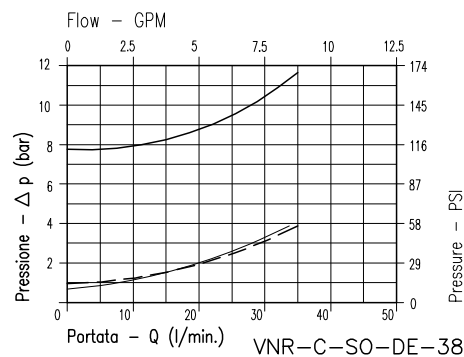
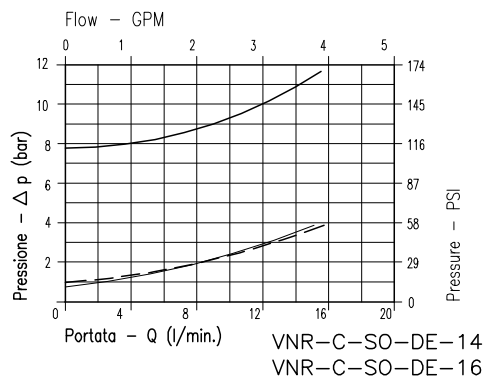
PERFORMANCE

| |
|------------------------|
| Min/max rated size |
| Min/max flow-rate |
| Max working pressure |
| Pilot ratio |
| Room temperature |
| Oil temperature |
| Recommended filtration |
| Weight |
| Weight |
| Weight |

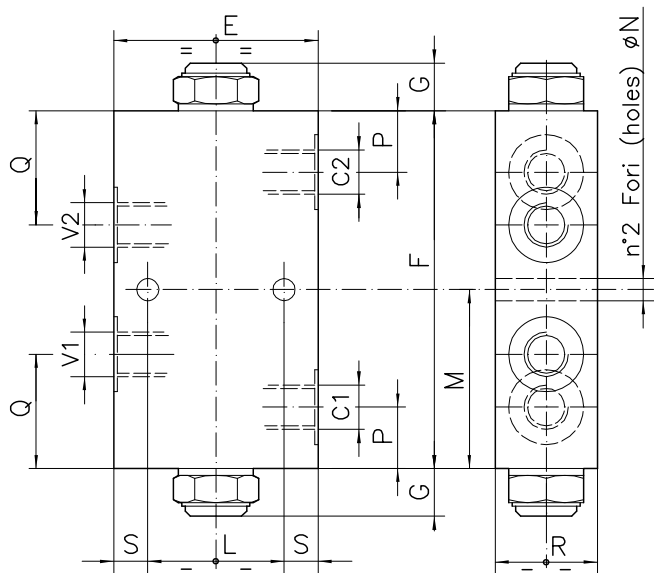
8Bar Flusso libero
(free flow)

1Bar Flusso libero
(free flow)

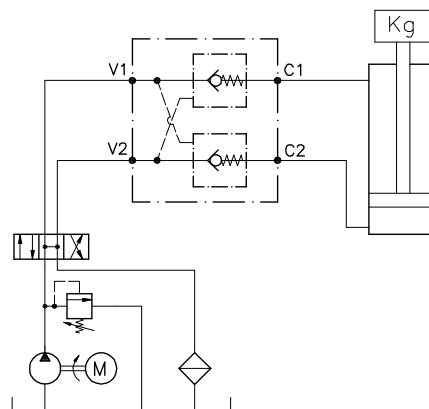
Flusso pilotato
(piloted flow)



Viscosità olio 46 cSt a 50°C / Oil viscosity 46 cSt at 50°C



ESEMPIO TIPICO DI CIRCUITO TYPICAL CIRCUIT EXAMPLE



DIMENSIONI DIMENSIONS

| NUMERO VALVOLA VALVE NUMBER | E | F | G | L | M | N | P | Q | R | S | Attacchi Port size V2-C2 V1-C1 GAS (BSPP) | Luca nominale Rated size DN | Portata max Max flow-rate l/min - GPM | |
|-----------------------------------|----|-----|----|----|----|-----|------|----|----|----|---|--------------------------------------|---|---------|
| 049 | 70 | 110 | 18 | 40 | 55 | 8.5 | 20.5 | 38 | 35 | 15 | 3/8" | 6 | 35-9.2 | VX3302M |
| 050 | 70 | 110 | 18 | 40 | 55 | 8.5 | 20.5 | 38 | 35 | 15 | 1/2" | 8 | 45-12 | VX3303M |

CODICE DI ORDINAZIONE HOW TO ORDER

003

049

0

J

0

Numero valvola / Valve number

049

050

Omettere nella sigla valvola
Do not use in valve code

- A O-RING sul pist. di pilotaggio
Pilot piston O-RING
- O Senza O-RING sul pist. di pilotaggio
No pilot piston O-RING

Inizio apertura
Cracking pressure

- J 1 bar
Molla (colore nero)
Spring (black)
- W 6÷8 bar
Molla (colore giallo)
Spring (yellow)