

CARATTERISTICHE

Luce nominale	DN 6
Portata min/max	1/25 l/min - 0.26/6.6 GPM
Pressione max. di picco	450 bar - 6525 PSI
Pressione max. di taratura	350 bar - 5075 PSI
Rapporto di pilotaggio standard	4 : 1
Temperatura ambiente	-30°C + 50°C
Temperatura olio	-30°C + 80°C
Filtraggio consigliato	30 micron
Coppia di serraggio	
Peso	0.300 Kg

PERFORMANCE

Rated size
Min/max flow-rate
Max peak pressure
Max setting pressure
Standard pilot ratio
Room temperature
Oil temperature
Recommended filtration
Tightening torque
Weight

NOTE:

La taratura deve essere **1.3** volte maggiore della pressione indotta dal carico.

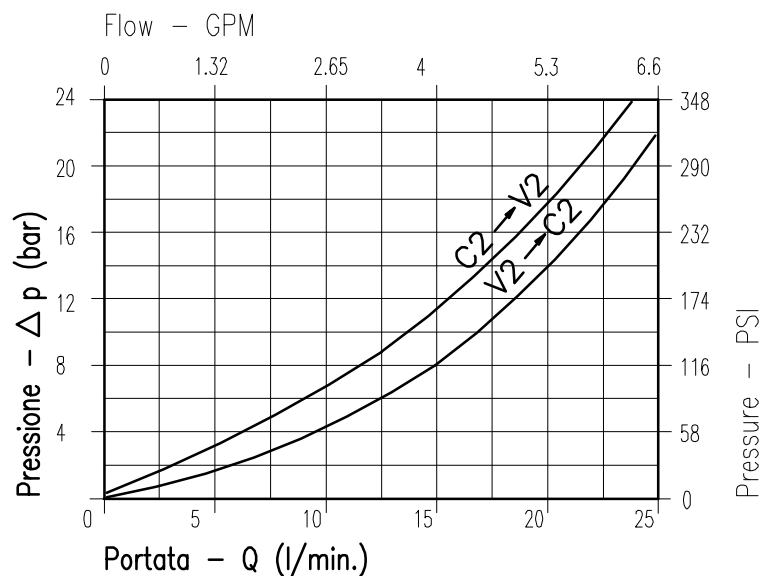
Valve should be set at **1.3** times load induced pressure.

ESEMPIO/EXAMPLE:

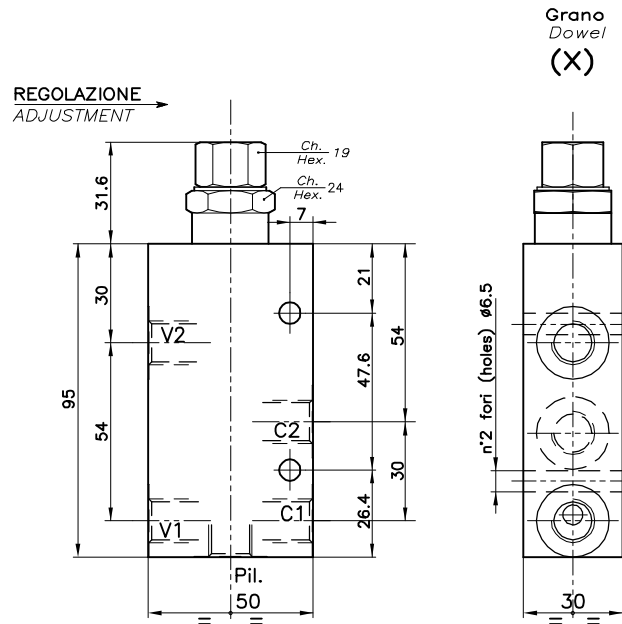
Pressione di lavoro max:

Max working pressure:

350 bar / 1.3 = 270 bar



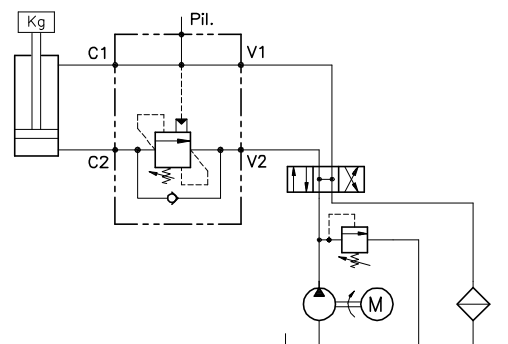
Viscosità olio 46 cSt a 50°C
Oil viscosity 46 cSt at 50°C



DIMENSIONI DIMENSIONS

Campo taratura Setting range	Attacchi Port size V2-C2 V1-C1-PIL GAS (BSPF)	Luce nominale Rated size	Portata max Max flow-rate
623	1/4"	DN 6	l/min - GPM 25-6

ESEMPIO TIPICO DI CIRCUITO TYPICAL CIRCUIT EXAMPLE



CODICE DI ORDINAZIONE HOW TO ORDER

001 . 623 . 0 X 0 . A

Campo taratura / Setting range

623

Campo taratura 60÷350 bar (molla colore giallo)
Setting range 60÷350 bar (yellow spring)

Taratura standard (Q=5 l/1')
Std. bar setting Q=5 l/1')

250 bar

Incr. press. - bar giro/vite
Pressure rise - turn of screw
(75)

Rapporto
di pilotaggio
Pilot ratios

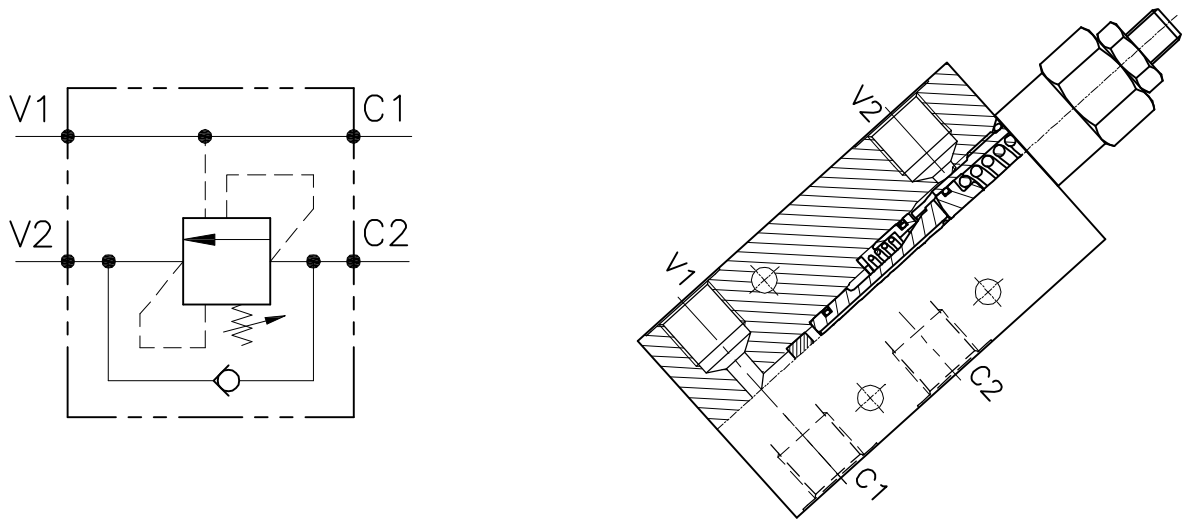
O 4 : 1
F 7 : 1

Regolazione
Adjustment

X Grano - Dowel

Collettore
Body

A Acciaio
zincato
Zinc plated
steel



CARATTERISTICHE

Luce nominale	DN 6/8/10
Portata min/max	1/60 l/min - 0,26/15,9 GPM
Pressione max. di picco	450 bar - 6525 PSI
Pressione max. di taratura	350 bar - 5075 PSI
Rapporto di pilotaggio standard	4,25 : 1
Temperatura ambiente	-30°C + 50°C
Temperatura olio	-30°C + 80°C
Filtraggio consigliato	30 micron
Coppia di serraggio	
Peso	

PERFORMANCE

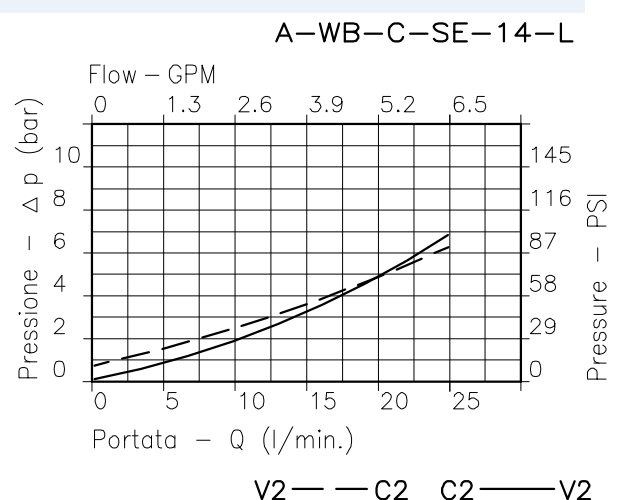
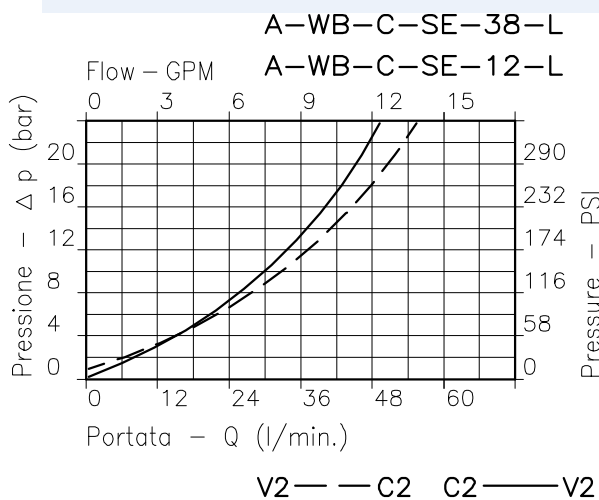
Rated size
Min/max flow-rate
Max peak pressure
Max setting pressure
Standard pilot ratio
Room temperature
Oil temperature
Recommended filtration
Tightening torque
Weight

NOTE:

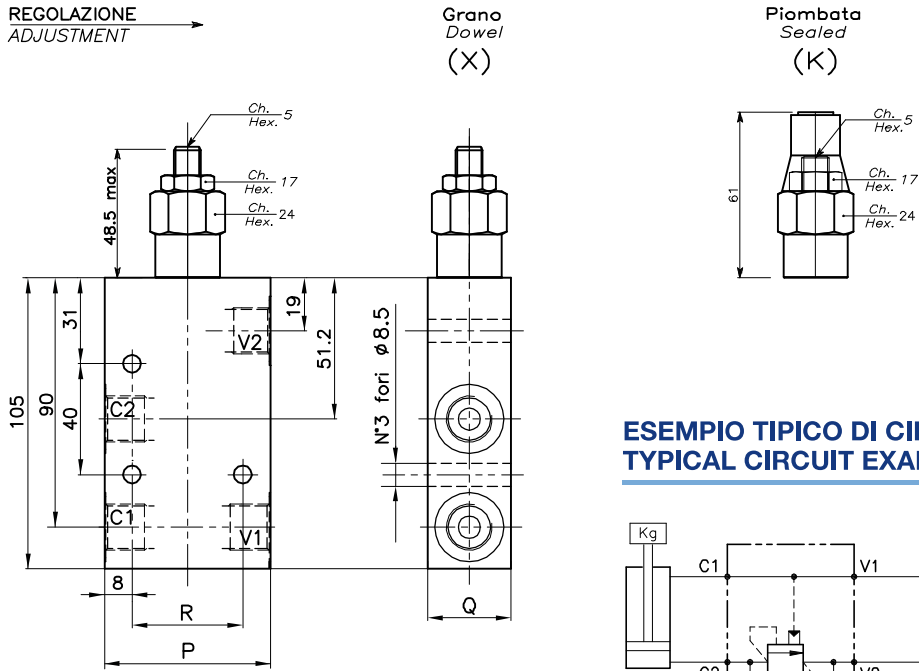
La taratura deve essere 1.3 volte maggiore della pressione indotta dal carico. Valve should be set at 1.3 times load induced pressure.

ESEMPIO/EXAMPLE:

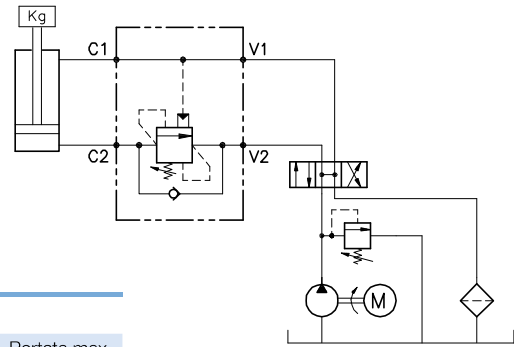
Pressione di lavoro max **350 bar / 1.3 = 270 bar** Max working pressure
Fornitura standard valvola: corpo in acciaio. A richiesta corpo in alluminio. Steel body valves as standard, aluminium body on request



Viscosità olio 46 cSt a 50°C - Oil viscosity 46 cSt at 50°C



ESEMPIO TIPICO DI CIRCUITO TYPICAL CIRCUIT EXAMPLE



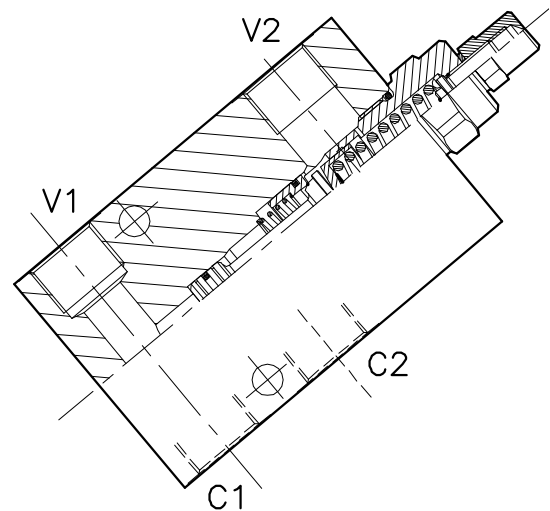
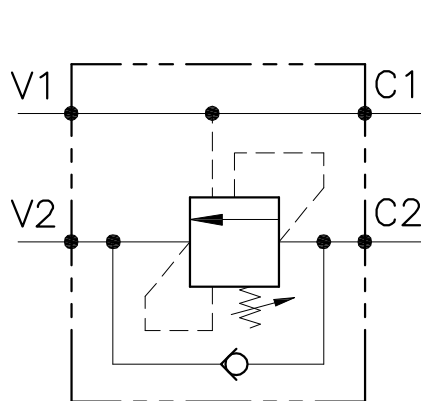
DIMENSIONI DIMENSIONS

Campo taratura Setting range		P	Q	R	Attacchi Port size V2-C2 V1-C1 GAS (BSPP)	Luce nominale Rated size	Portata max Max flow-rate
						DN	l/min - GPM
328	327	60	30	40	3/8"	8	40-10
330	329	70	35	50	1/2"	10	60-15

CODICE DI ORDINAZIONE HOW TO ORDER

N01 . 328 . 0 X 0 . A

Campo taratura / Setting range				Rapporto di pilotaggio Pilot ratios	Regolazione Adjustment	Collettore Body
328		327		O 4.25 : 1	X Grano - Dowel	A Acciaio zincato Zinc plated steel
330		329		D 8 : 1	K Piombata - Sealed	
Campo taratura 30÷220 bar (molla colore verde) Setting range 30÷220 bar (green spring)		Campo taratura 60÷350 bar (molla colore giallo) Setting range 60÷350 bar (yellow spring)				
Taratura standard (Q=5 l/1')	Incr. press. - bar giro/vite	Taratura standard (Q=5 l/1')	Incr. press. - bar giro/vite			
Std. bar setting (Q=5 l/1')	Pressure rise - turn of screw	Std. bar setting (Q=5 l/1')	Pressure rise - turn of screw			
180 bar	(50)	250 bar	(90)			
				327	Collettore possibile in AL togliendo "A"	
				328		
				329		
				330		



CARATTERISTICHE

Luce nominale
Portata min/max
Pressione max. di picco
Pressione max. di taratura
Rapporto di pilotaggio standard
Temperatura ambiente
Temperatura olio
Filtraggio consigliato
Coppia di serraggio
Peso

DN 12/14
1/160 l/min - 0.26/42.3 GPM
450 bar - 6525 PSI
350 bar - 5075 PSI
6.2 : 1
-30°C + 50°C
-30°C + 80°C
30÷50

PERFORMANCE

Rated size
Min/max flow-rate
Max peak pressure
Max setting pressure
Standard pilot ratio
Room temperature
Oil temperature
Recommended filtration
Tightening torque
Weight

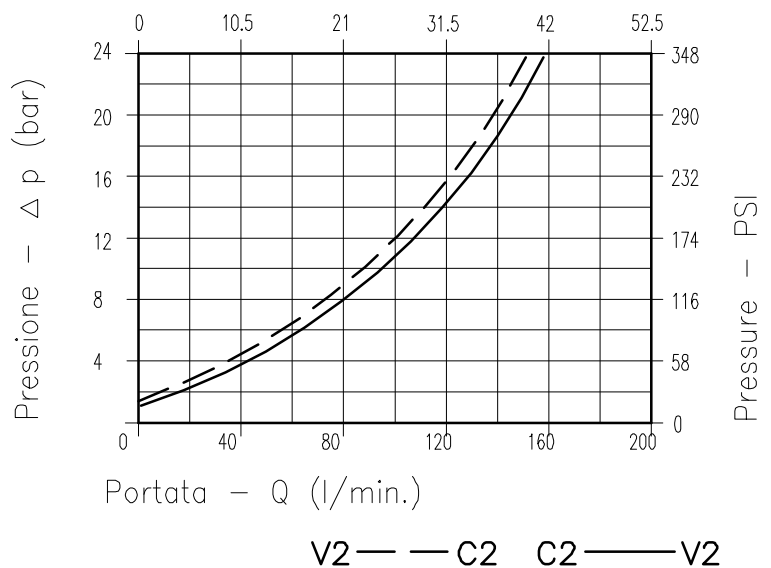
NOTE:

La taratura deve essere **1.3** volte maggiore della pressione indotta dal carico.

Valve should be set at **1.3** times load induced pressure.

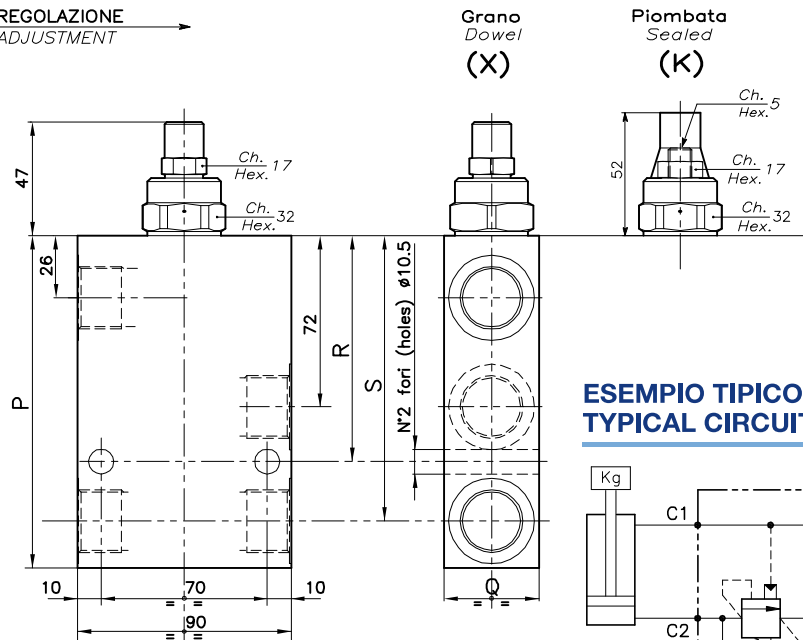
ESEMPIO/EXAMPLE:

Pressione di lavoro max:
Max working pressure:
350 bar / 1.3 = 270 bar

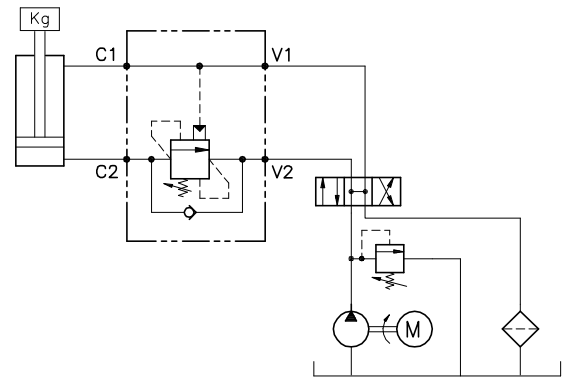


Viscosità olio 46 cSt a 50°C
Oil viscosity 46 cSt at 50°C

REGOLAZIONE
ADJUSTMENT →



ESEMPIO TIPICO DI CIRCUITO TYPICAL CIRCUIT EXAMPLE



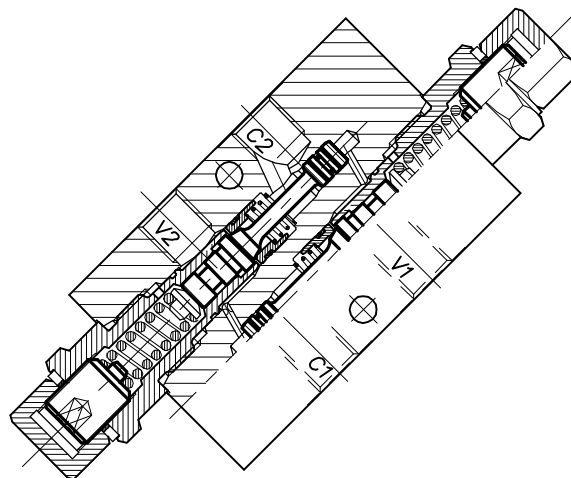
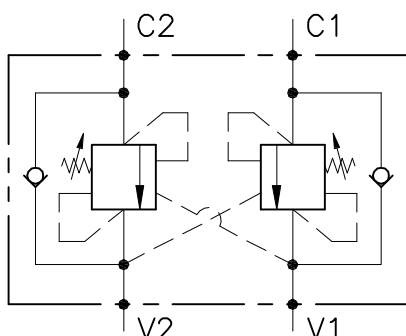
DIMENSIONI DIMENSIONS

Campo taratura Setting range	P	Q	R	S	Attacchi Port size V2-C2 V1-C1 GAS (BSPP)	Luce nominale Rated size	Portata max Max flow-rate	Corpo Body
265	140	40	95	120	3/4"	12	120-31	Acciaio Steel
266	165	50	107	142	1"	14	160-42	Acciaio Steel

CODICE DI ORDINAZIONE HOW TO ORDER

001 . 265 . 0 X 0 . A

Campo taratura / Setting range		Rapporto di pilotaggio Pilot ratios		Regolazione Adjustment		Collettore Body	
265		O	6.2 : 1	X	Grano - Dowel	A	
266		G	4.1 : 1	K	Piombata - Sealed	Acciaio zincato Zinc plated steel	
Campo taratura 60÷350 bar (molla colore giallo) Setting range 60÷350 bar (yellow spring)		Taratura standard (Q=5 l/1') Std. bar setting Q=5 l/1')		Incr. press. - bar giro/vite Pressure rise - turn of screw			
250 bar				(125)			



CARATTERISTICHE

Luce nominale	DN 6
Portata min/max	1/25 l/min - 0.26/6.6 GPM
Pressione max. di picco	350 bar - 5075 PSI
Pressione max. di taratura	350 bar - 5075 PSI
Rapporto di pilotaggio standard	4 : 1
Temperatura ambiente	-30°C + 50°C
Temperatura olio	-30°C + 80°C
Filtraggio consigliato	30 micron
Coppia di serraggio	
Peso	0.300 Kg

PERFORMANCE

Rated size
Min/max flow-rate
Max peak pressure
Max setting pressure
Standard pilot ratio
Room temperature
Oil temperature
Recommended filtration
Tightening torque
Weight

NOTE:

La taratura deve essere **1.3** volte maggiore della pressione indotta dal carico.

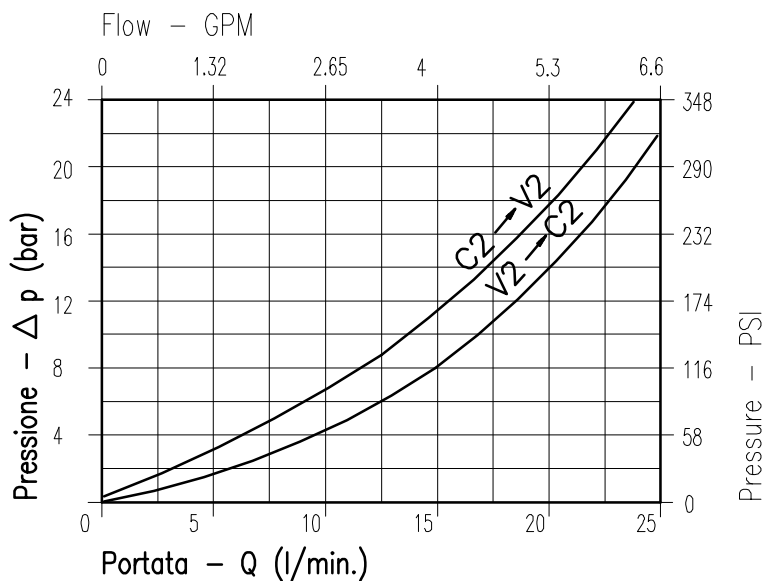
Valve should be set at **1.3** times load induced pressure.

ESEMPIO/EXAMPLE:

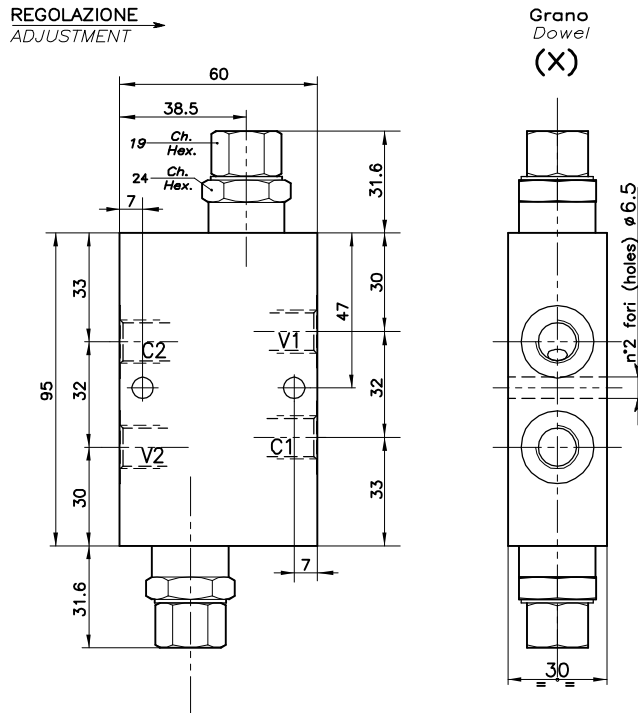
Pressione di lavoro max:

Max working pressure:

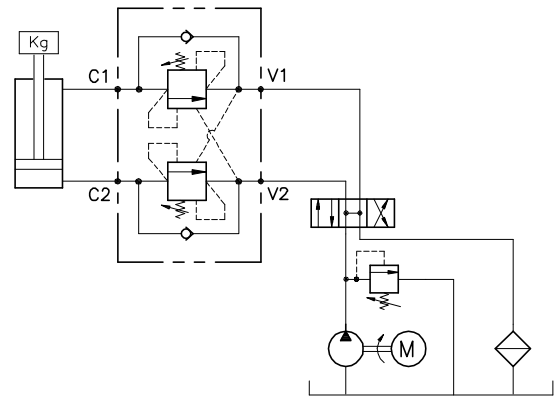
350 bar / 1.3 = 270 bar



Viscosità olio 46 cSt a 50°C
Oil viscosity 46 cSt at 50°C



ESEMPIO TIPICO DI CIRCUITO TYPICAL CIRCUIT EXAMPLE



DIMENSIONI DIMENSIONS

Campo taratura Setting range	Attacchi Port size V1-C1 V2-C2 GAS (BSP)	Luce nominale Rated size	Portata max Max flow-rate
626	1/4"	DN 6	l/min - GPM 25-6

CODICE DI ORDINAZIONE HOW TO ORDER

001 . 626 . 0 X 0 . A

Campo taratura / Setting range

626

Campo taratura 60÷350 bar (molla colore verde)
Setting range 60÷350 bar (green spring)

Taratura standard (Q=5 l/1')
Std. bar setting Q=5 l/1')

250 bar

Incr. press. - bar giro/vite
Pressure rise - turn of screw
(75)

Rapporto di pilotaggio
Pilot ratios

O 4 : 1
F 7 : 1

Regolazione
Adjustment

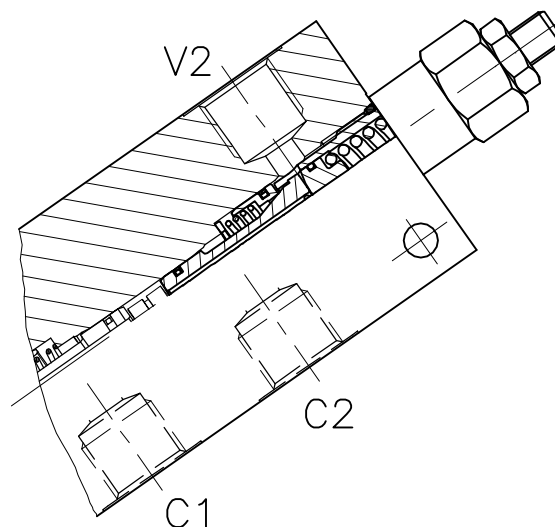
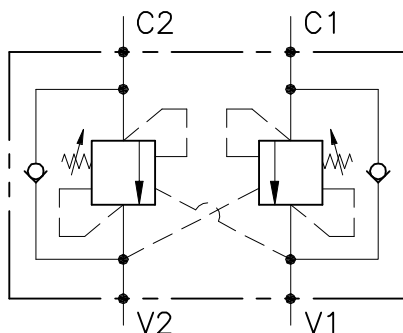
X Grano - Dowel

Collettore
Body

A Acciaio
zincato
Zinc plated
steel

626

Collettore possibile in AL togliendo "A"
Available aluminium body without "A"



CARATTERISTICHE

Luce nominale	DN 6/8/10
Portata min/max	1/60 l/min - 0.26/15.9 GPM
Pressione max. di picco	350 bar - 5075 PSI
Pressione max. di taratura	350 bar - 5075 PSI
Rapporto di pilotaggio standard	4.25 : 1
Temperatura ambiente	-30°C + 50°C
Temperatura olio	-30°C + 80°C
Filtraggio consigliato	30 micron
Coppia di serraggio	
Peso	

PERFORMANCE

Rated size
Min/max flow-rate
Max peak pressure
Max setting pressure
Standard pilot ratio
Room temperature
Oil temperature
Recommended filtration
Tightening torque
Weight

NOTE:

La taratura deve essere **1.3** volte maggiore della pressione indotta dal carico.

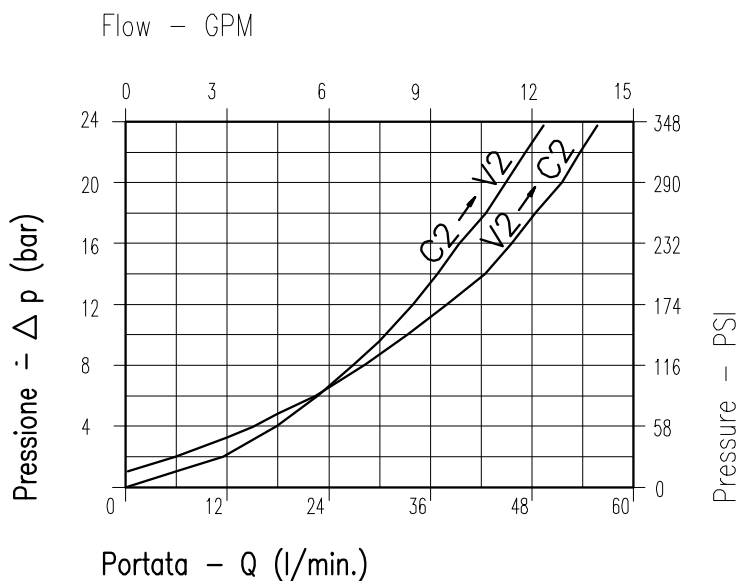
Valve should be set at **1.3** times load induced pressure.

ESEMPIO/EXAMPLE:

Pressione di lavoro max:

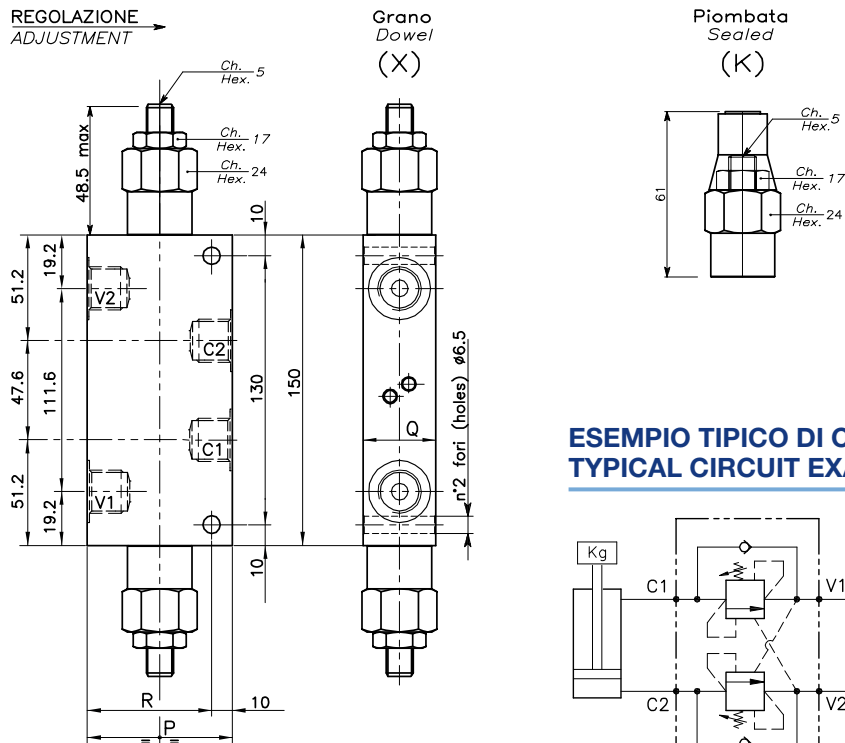
Max working pressure:

350 bar / 1.3 = 270 bar

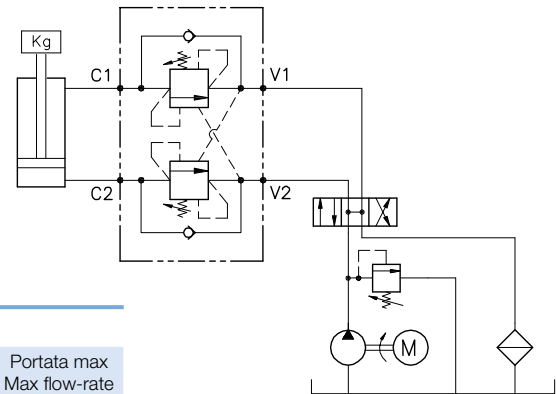


Viscosità olio 46 cSt a 50°C
Oil viscosity 46 cSt at 50°C

VÁLVULA OVERCENTER TIPO L DOBLE



ESEMPIO TIPICO DI CIRCUITO TYPICAL CIRCUIT EXAMPLE



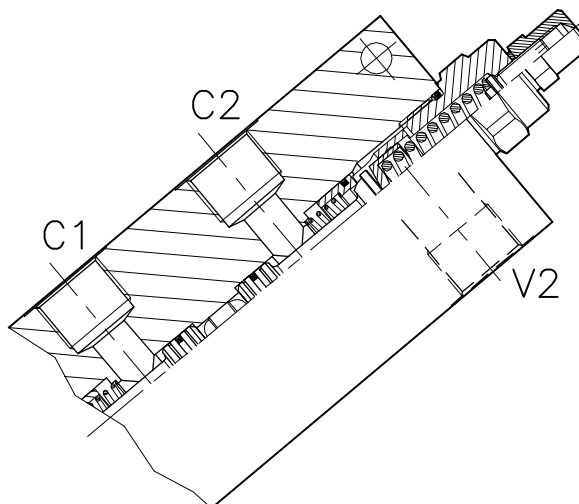
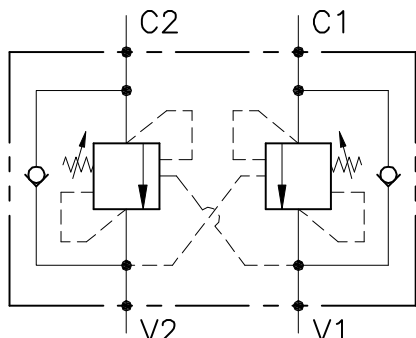
DIMENSIONI DIMENSIONS

Campo taratura Setting range		P	Q	R	Attacchi Port size V2-C2 V1-C1 GAS (BSPP)	Luce nominale Rated size	Portata max Max flow-rate
						DN	l/min - GPM
256	257	60	30	50	3/8"	8	40-10
258	259	70	35	60	1/2"	10	60 -15

CODICE DI ORDINAZIONE HOW TO ORDER

N01 . 256 . 0 X 0 . A

Campo taratura / Setting range				Rapporto di pilotaggio Pilot ratios	Regolazione Adjustment	Collettore Body
256		257		O 4.25 : 1	X Grano - Dowel	A Acciaio zincato Zinc plated steel
258		259		D 8 : 1	K Piombata - Sealed	
Campo taratura 30÷220 bar (molla colore verde) Setting range 30÷220 bar (green spring)		Campo taratura 60÷350 bar (molla colore giallo) Setting range 60÷350 bar (yellow spring)				
Taratura standard (Q=5 l/1')	Incr. press. - bar giro/vite	Taratura standard (Q=5 l/1')	Incr. press. - bar giro/vite			
Std. bar setting (Q=5 l/1')	Pressure rise - turn of screw	Std. bar setting (Q=5 l/1')	Pressure rise - turn of screw			
180 bar	(50)	250 bar	(90)			
258	Collettore possibile in AL togliendo "A"					
259	Available aluminium body without "A"					
256						
257						



CARATTERISTICHE

Luce nominale
Portata min/max
Pressione max. di picco
Pressione max. di taratura
Rapporto di pilotaggio standard
Temperatura ambiente
Temperatura olio
Filtraggio consigliato
Coppia di serraggio
Peso

DN 12/14
1/160 l/min - 0.26/42.3 GPM
350 bar - 5075 PSI
350 bar - 5075 PSI
6.2 : 1
-30°C + 50°C
-30°C + 80°C
30 micron

PERFORMANCE

Rated size
Min/max flow-rate
Max peak pressure
Max setting pressure
Standard pilot ratio
Room temperature
Oil temperature
Recommended filtration
Tightening torque
Weight

NOTE:

La taratura deve essere **1.3** volte maggiore della pressione indotta dal carico.

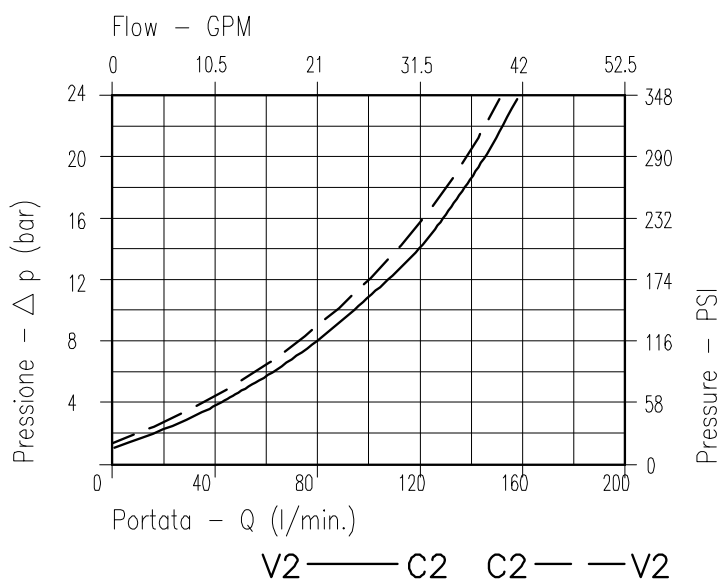
Valve should be set at **1.3** times load induced pressure.

ESEMPIO/EXAMPLE:

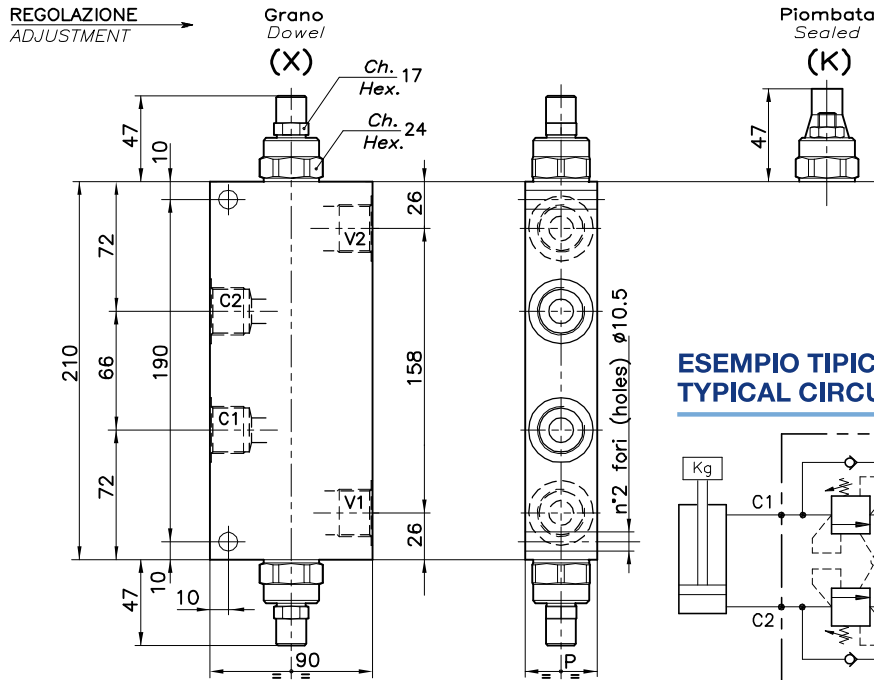
Pressione di lavoro max:

Max working pressure:

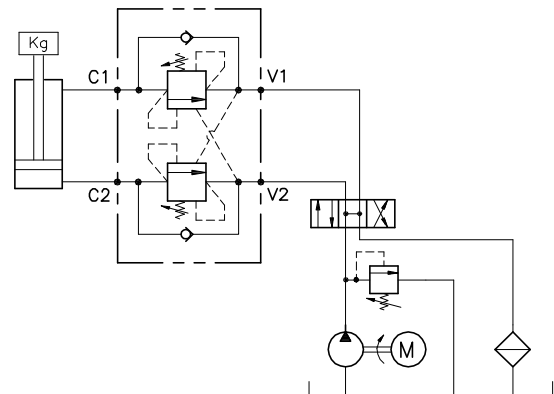
350 bar / 1.3 = 270 bar



Viscosità olio 46 cSt a 50°C
Oil viscosity 46 cSt at 50°C



ESEMPIO TIPICO DI CIRCUITO TYPICAL CIRCUIT EXAMPLE



DIMENSIONI DIMENSIONS

Campo taratura Setting range	P	Attacchi Port size V1-C1 V2-C2 GAS (BSP)	Luce nominale Rated size DN	Portata max Max flow-rate l/min - GPM
453	40	3/4"	12	120-31
454	50	1"	14	160-42

CODICE DI ORDINAZIONE HOW TO ORDER

001 . 453 . 0 X 0 . A

Campo taratura / Setting range		Rapporto di pilotaggio Pilot ratios		Regolazione Adjustment		Collettore Body	
453		O 6.20 : 1	X Grano - Dowel	K Piombata - Sealed		A Acciaio zincato Zinc plated steel	
454		G 4 : 1					
Campo taratura 60÷350 bar (molla colore giallo) Setting range 60÷350 bar (yellow spring)		Incr. press. - bar giro/vite Pressure rise - turn of screw					
Taratura standard (Q=5 l/1') Std. bar setting Q=5 l/1')		(125)					
250 bar							
		453		Collettore possibile in AL togliendo "A" Available aluminium body without "A"			