

CARATTERISTICHE

Luce nominale	DN 6/8/10
Portata min/max	1/25 l/min - 0.26/6.6 GPM
Pressione max. di picco	350 bar - 5075 PSI
Pressione max. di taratura	350 bar - 5075 PSI
Rapporto di pilotaggio standard	4.25 : 1
Temperatura ambiente	-30°C + 50°C
Temperatura olio	-30°C + 80°C
Filtraggio consigliato	30 micron
Coppia di serraggio	
Peso	0.300 Kg

PERFORMANCE

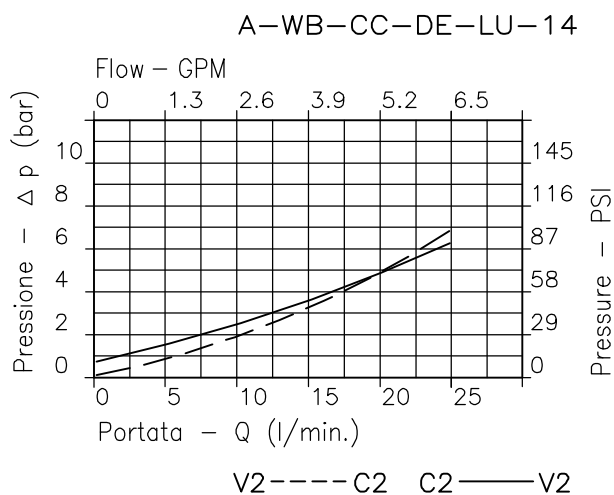
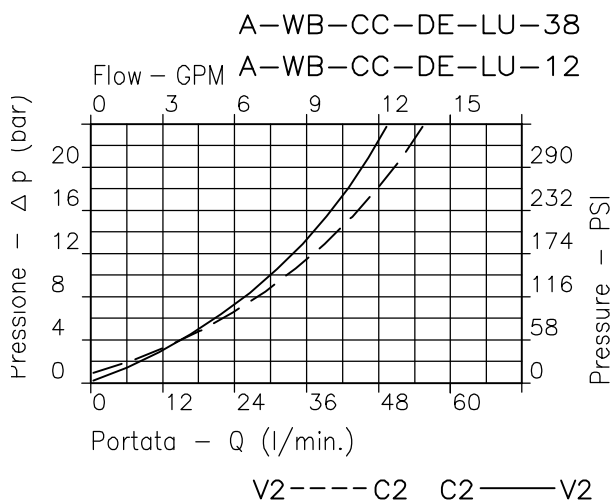
Rated size
Min/max flow-rate
Max peak pressure
Max setting pressure
Standard pilot ratio
Room temperature
Oil temperature
Recommended filtration
Tightening torque
Weight

NOTE:

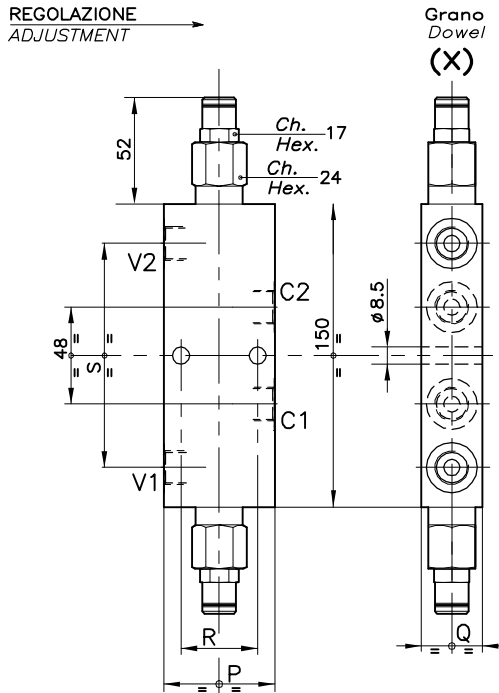
La taratura deve essere 1.3 volte maggiore della pressione indotta dal carico. Valve should be set at 1.3 times load induced pressure.

ESEMPIO/EXAMPLE:

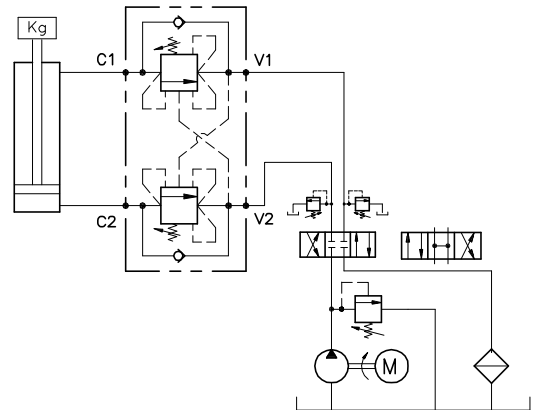
Pressione di lavoro max **350 bar / 1.3 = 270 bar** Max working pressure
 Fornitura standard valvola: corpo in acciaio. A richiesta corpo in alluminio. Steel body valves as standard, aluminium body on request



Viscosità olio 46 cSt a 50°C - Oil viscosity 46 cSt at 50°C



ESEMPIO TIPICO DI CIRCUITO TYPICAL CIRCUIT EXAMPLE



DIMENSIONI DIMENSIONS

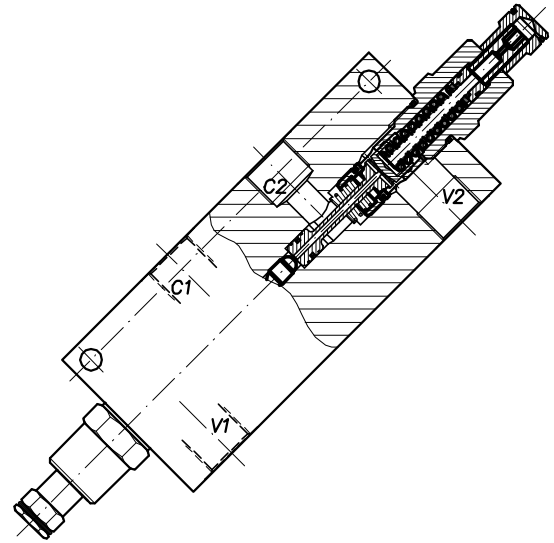
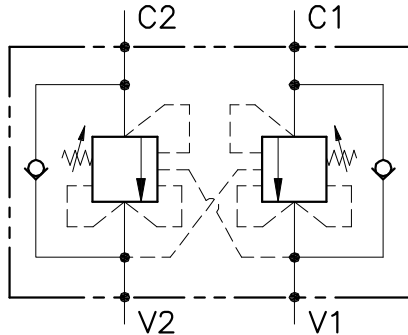
Campo taratura Setting range		P	Q	R	S	Attacchi Port size V2-C2 V1-C1 GAS (BSPP)	Luce nominale Rated size DN	Portata max Max flow-rate l/min - GPM
460	459	55	30	38	109.6	3/8"	8	40-10
462	461	65	35	43	112	1/2"	10	60-15

CODICE DI ORDINAZIONE HOW TO ORDER

001 . 460 . 0 X 0 . A

Campo taratura / Setting range			
460		459	
462		461	
Campo taratura 30÷220 bar (molla colore verde)		Campo taratura 60÷350 bar (molla colore rosso)	
Setting range 30÷220 bar (green spring)		Setting range 60÷350 bar (red spring)	
Taratura standard (Q=5 l/1')	Incr. press. - bar giro/vite	Taratura standard (Q=5 l/1')	Incr. press. - bar giro/vite
Std. bar setting (Q=5 l/1')	Pressure rise - turn of screw	Std. bar setting (Q=5 l/1')	Pressure rise - turn of screw
180 bar	(60)	250 bar	(140)

Rapporto di pilotaggio Pilot ratios		Regolazione Adjustment		Collettore Body	
O	4.25 : 1	X	Grano - Dowel	A	Acciaio zincato Zinc plated steel
D	8 : 1				
461					
462	Collettore possibile in AL togliendo "A"				
460	Available aluminium body without "A"				
459					



CARATTERISTICHE

Luce nominale	DN 12/14
Portata min/max	1/160 l/min - 0.26/42.3 GPM
Pressione max. di picco	350 bar - 5075 PSI
Pressione max. di taratura	350 bar - 5075 PSI
Rapporto di pilotaggio standard	6.2 : 1
Temperatura ambiente	-30°C + 50°C
Temperatura olio	-30°C + 80°C
Filtraggio consigliato	30 micron
Peso	

PERFORMANCE

Rated size
Min/max flow-rate
Max peak pressure
Max setting pressure
Standard pilot ratio
Room temperature
Oil temperature
Recommended filtration
Weight

NOTE:

La taratura deve essere **1.3** volte maggiore della pressione indotta dal carico.

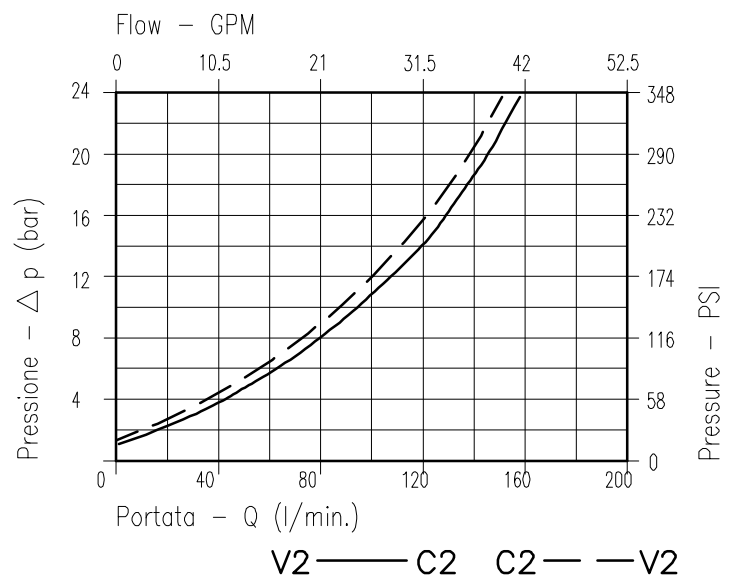
Valve should be set at **1.3** times load induced pressure.

ESEMPIO/EXAMPLE:

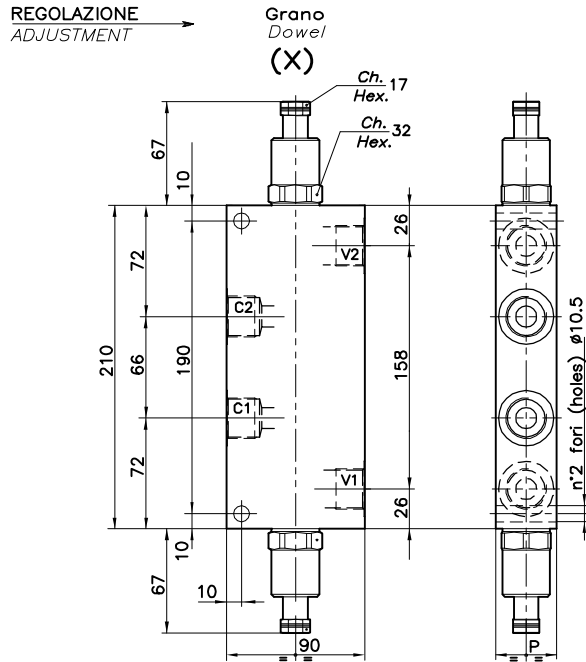
Pressione di lavoro max:

Max working pressure:

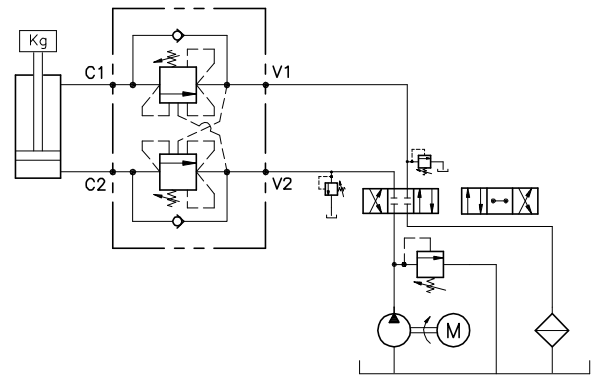
350 bar / 1.3 = 270 bar



Viscosità olio 46 cSt a 50°C
Oil viscosity 46 cSt at 50°C



ESEMPIO TIPICO DI CIRCUITO TYPICAL CIRCUIT EXAMPLE



DIMENSIONI DIMENSIONS

Campo taratura Setting range	P	Attacchi Port size V1-C1 V2-C2 GAS (BSPP)	Luce nominale Rated size DN	Portata max Max flow-rate l/min - GPM
463	40	3/4"	12	120-31
464	50	1"	14	180-47

CODICE DI ORDINAZIONE HOW TO ORDER

001 . 463 . 0 X 0 . A

Campo taratura / Setting range	463 464
Campo taratura 60÷350 bar (molla colore giallo) Setting range 60÷350 bar (yellow spring)	
Taratura standard (Q=5 l/1') Std. bar setting Q=5 l/1')	250 bar
Incr. press. - bar giro/vite Pressure rise - turn of screw	(140)

Rapporto di pilotaggio Pilot ratios	Regolazione Adjustment	Collettore Body
O 6.2 : 1 G 4 : 1	X Grano - Dowel	A Acciaio zincato Zinc plated steel

463

Collettore possibile in AL togliendo "A"
Available aluminium body without "A"