

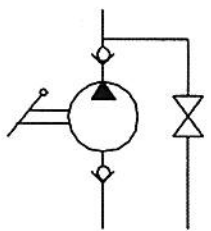
POMPA A MANO PM 12-25-45
con volantino di scarico

HAND PUMP PM 12-25-45
with exhaust handwheel

Pompa doppio effetto per cilindro a semplice effetto per montaggio su serbatoio

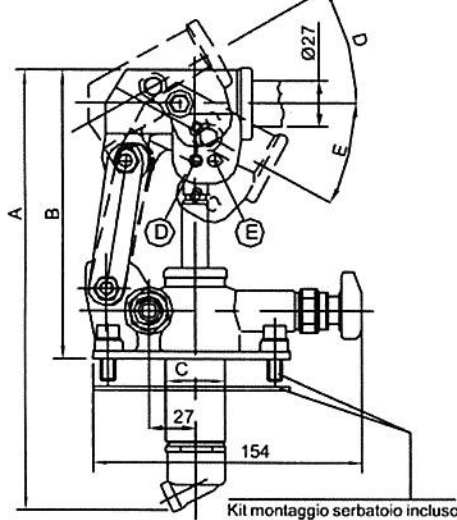
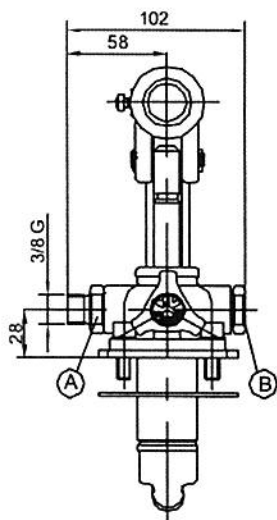
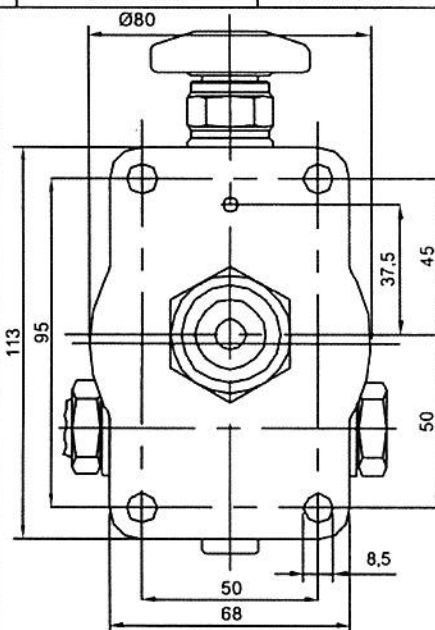
Double-acting pump for single-acting cylinder for assembly on tank

Tipo di pompa Type of pump	Cilindr. (cm ³) Flow (cm ³)	Pressione (Pressure) (bar)		Massa (Kg) Weight (Kg)	Codice senza soffieta. Code without bellows	Codice con soffieta. Code with bellows
		eserciz. (exerciz.)	max.			
PM 12	12,095	320	380	2,90	60500000	60500116
PM 25	25,280	280	350	2,95	60510000	60510116
PM 45	44,532	220	280	3,00	60520000	60520116



**TABELLA DIMENSIONI
SIZE TABLE**

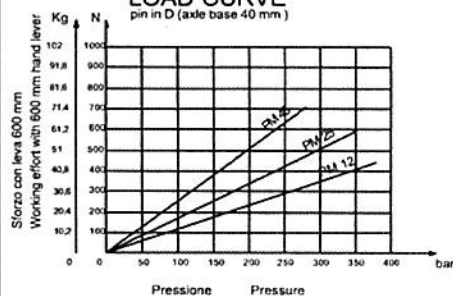
Tipo di pompa Type of pump	A (mm)	B (mm)	C (mm)	D (°)	E (°)
PM 12	253	166	34	26	31
PM 25	273	172	34	30	30
PM 45	283	172	40	45	33



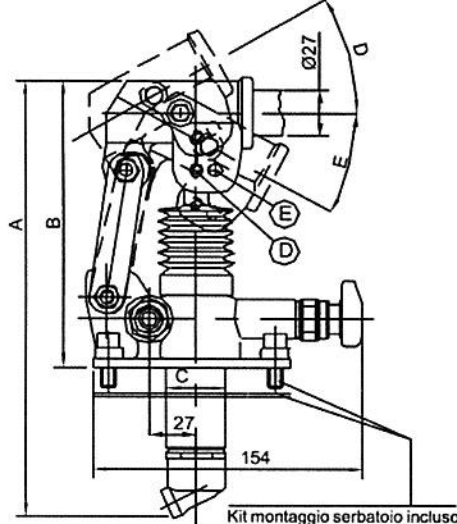
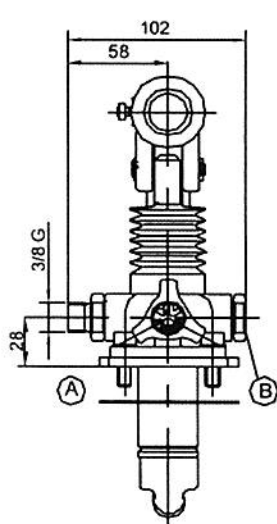
PM 12/25/45

Kit montaggio serbatoio incluso
Oil tank mounting kit included

**DIAGRAMMA DI CARICO
con spina in D (interasse 40 mm)
LOAD CURVE
pin in D (axle base 40 mm)**

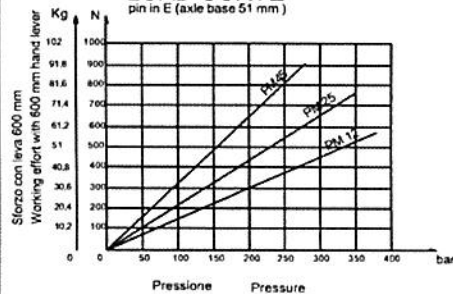


PM 12/25/45 s



Kit montaggio serbatoio incluso
Oil tank mounting kit included

**DIAGRAMMA DI CARICO
con spina in E (interasse 51 mm)
LOAD CURVE
pin in E (axle base 51 mm)**



Interassi consigliati: PM 12 40 mm (D)
Axle base advised: PM 25 51 mm (E)
PM 45 51 mm (E)

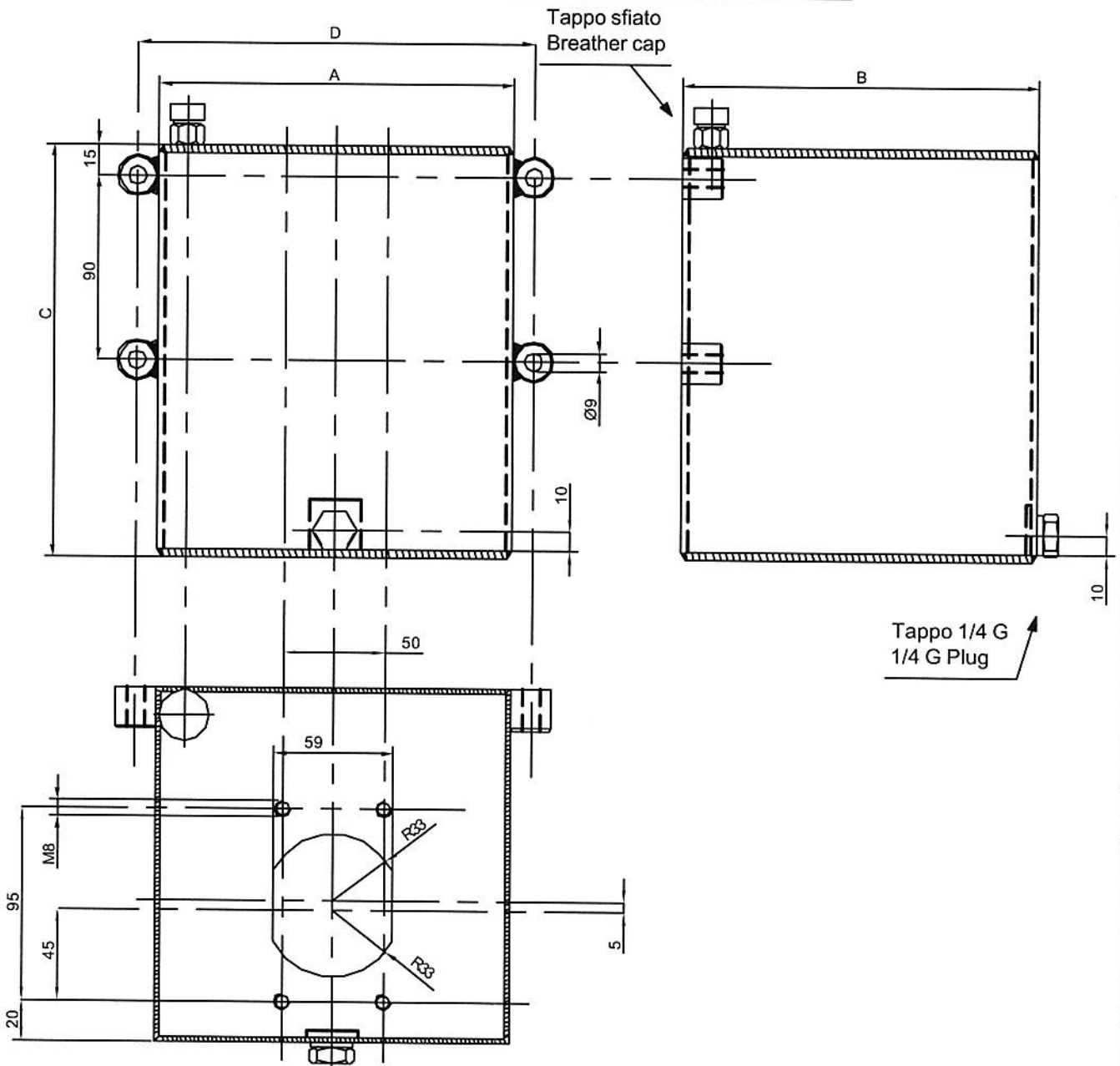
Pag.

18

SERBATOI IN ACCIAIO
VERNICIATO
PER POMPE A MANO

PAINTED STEEL OIL
TANK FOR
HAND PUMPS

Capacità (litri) Capacity (litre)	CODICE CODE	A (mm)	B (mm)	C (mm)	D (mm)	Massa (Kg) Weight (Kg)	Tubo aspirazione Suction tube
1	65000081	100	150	120	120	2,2	Ø10x85 mm
2	65000082	100	150	185	120	3,0	Ø10x114 mm
3	65000083	100	150	255	120	3,7	Ø10x180 mm
5	65000084	175	175	200	195	5,3	Ø10x156 mm
7	65000085	175	175	275	195	6,6	Ø10x215 mm
10	65000086	175	175	380	195	8,3	Ø10x325 mm



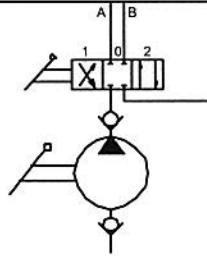
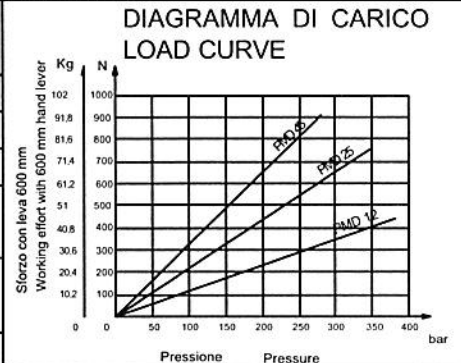
POMPA A MANO PMD 12-25-45
con distributore 4/3

HAND PUMP PMD 12-25-45
with 4/3 diverter

Pompa doppio effetto con distributore 4/3 per cilindro a doppio
effetto per montaggio su serbatoio

Double-acting pump with 4/3 diverter for a double-acting cylinder
for assembly on tank

Tipo di pompa Type of pump	(cm ³) (cm ³)	Pressione (Pressure) (bar)		Massa (Kg) Weight (Kg)
		eserciz. (exerciz.)	max.	
PMD 12	12,095	320	380	3,40
PMD 25	25,280	280	350	3,45
PMD 45	44,532	220	280	3,50



**TABELLA DIMENSIONI
SIZE TABLE**

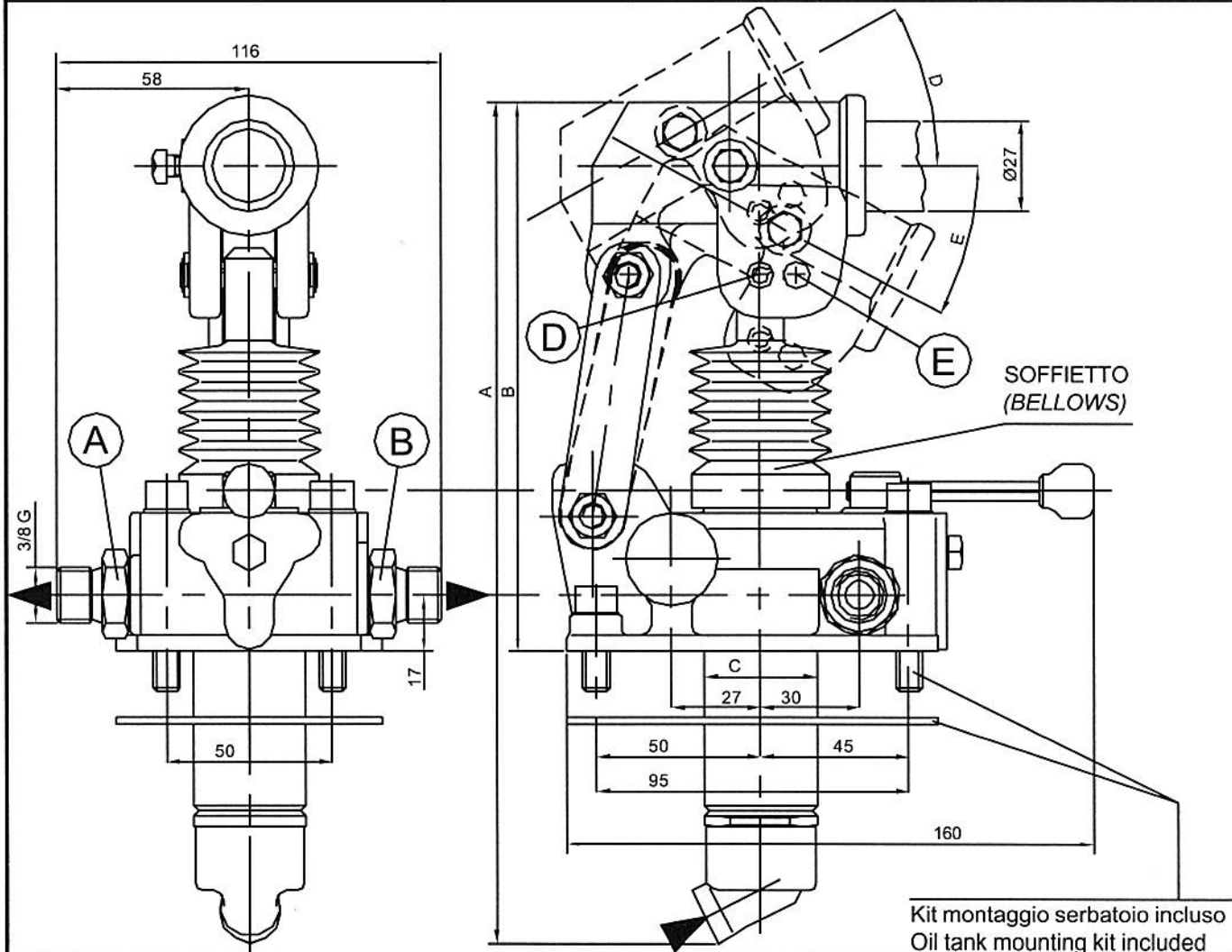
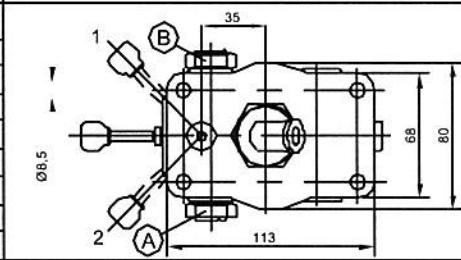
Tipo di pompa Type of pump	A (mm)	B (mm)	C (mm)	D (°)	E (°)
PMD 12	253	166	34	26	31
PMD 25	273	172	34	30	30
PMD 45	283	172	40	45	33

Interassi consigliati:
Axle base advised:

PMD 12 40 mm (D)
PMD 25 51 mm (E)
PMD 45 51 mm (E)

CODICE (CODE)

	PMD 12	PMD 25	PMD 45
Senza soffietto verniciata rossa Without bellows red painted	6055 . 0000	6056 . 0000	6057 . 0000
Con soffietto verniciata rossa With bellows red painted	6055 . 0027	6056 . 0027	6057 . 0027
Senza soffietto verniciata nera Without bellows black painted	6055 . 0018	6056 . 0018	6057 . 0018
Con soffietto verniciata nera With bellows black painted	6055 . 0045	6056 . 0045	6057 . 0045



Kit montaggio serbatoio incluso
Oil tank mounting kit included

SERBATOI IN ACCIAIO
VERNICIATO
PER POMPE A MANO

PAINTED STEEL OIL
TANK FOR
HAND PUMPS

Capacità (litri) Capacity (litre)	CODICE CODE	A (mm)	B (mm)	C (mm)	D (mm)	Massa (Kg) Weight(Kg)	Tubo aspirazione Suction tube
1	65000081	100	150	120	120	2,2	Ø10x85 mm
2	65000082	100	150	185	120	3,0	Ø10x114 mm
3	65000083	100	150	255	120	3,7	Ø10x180 mm
5	65000084	175	175	200	195	5,3	Ø10x156 mm
7	65000085	175	175	275	195	6,6	Ø10x215 mm
10	65000086	175	175	380	195	8,3	Ø10x325 mm

